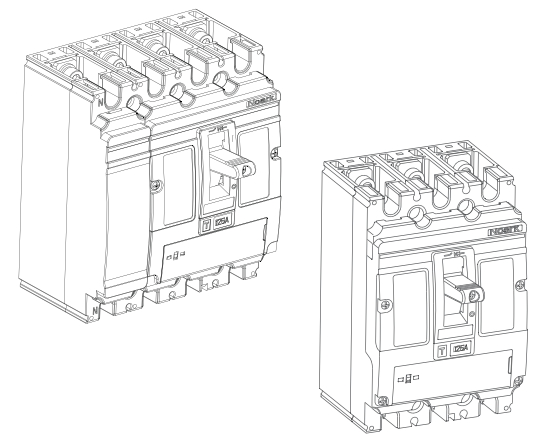


Ex9M1/ Ex9M1 SD

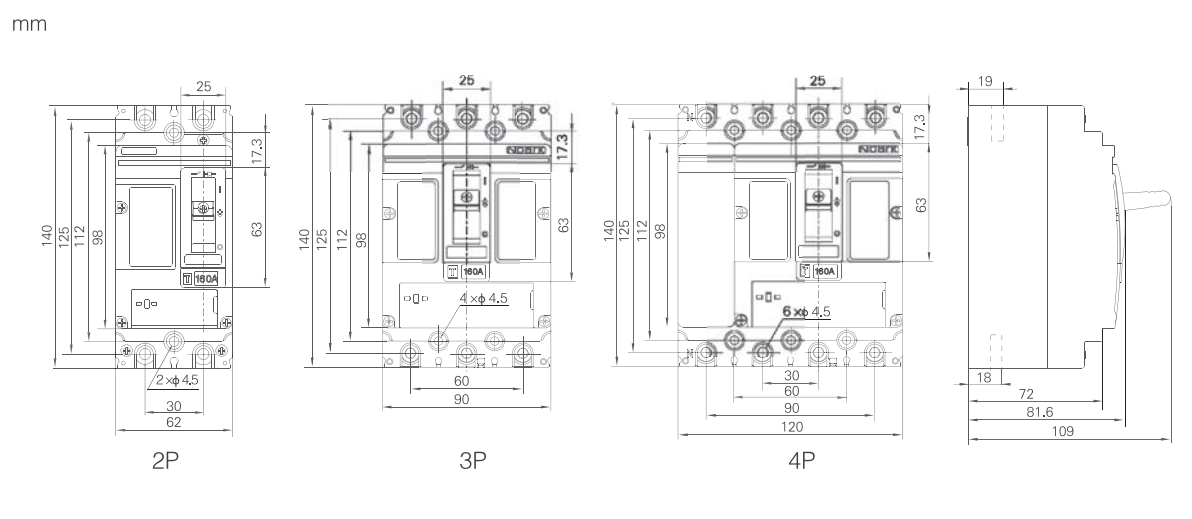
Ex9M1 塑料外壳式断路器
Ex9M1 Moulded Case Circuit Breaker
Ex9M1 SD 隔离开关 (交流)
Switch Disconnecter (AC)



未按本说明书要求操作造成的不良后果, 制造商将不承担责任。
The manufacturer assumes no responsibility for unfavourable consequence resulting from the non-application or incorrect application of the instructions provided herein.



外形尺寸 Outline Dimension

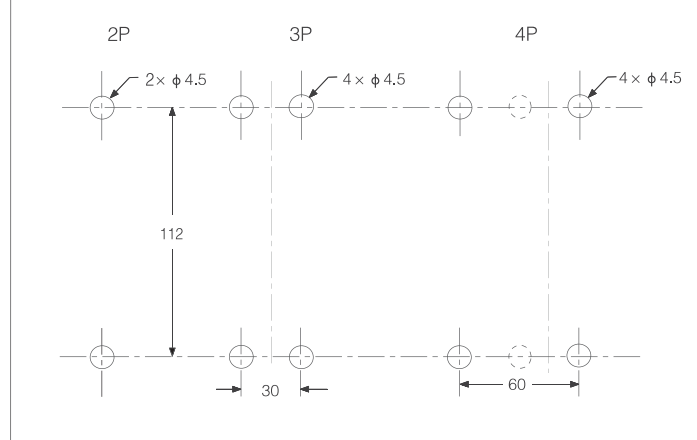


铭牌 Nameplate

在此包装盒中除产品本体上所粘贴的铭牌外, 还附加了手操、电操粘贴用的综合铭牌。客户若需使用手操或电操, 其粘贴方法详见相关说明书。

Except the existing nameplate on the product, we also prepare comprehensive nameplates for your manual use. Customers can use it in according to the instruction as needed.

安装尺寸 Installation Dimension

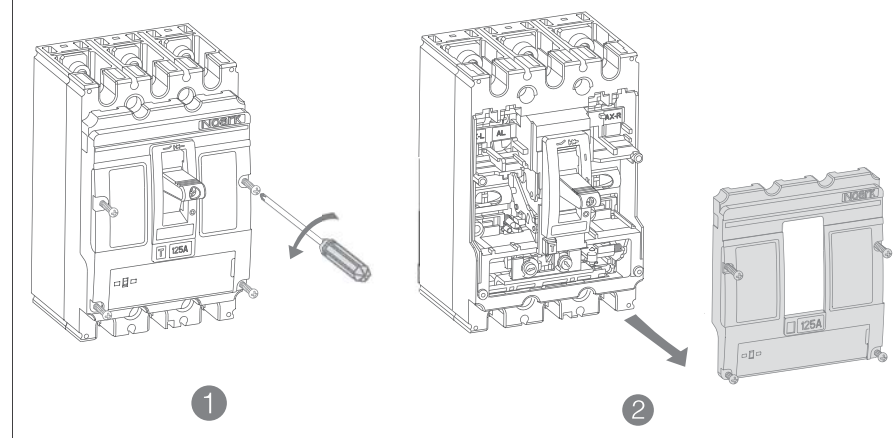


标配附件及必要工具 Standard Accessories & Necessary Tools

名称 Appellation	规格 Model	数量 Number		示意图 Figure			
		3P	4P	安装螺钉 Installation Bolt	弹垫 S-Washer	平垫 F-Washer	螺母 Nut
安装螺钉 Installation Bolt	M4 × 65	4	4				
弹垫 Spring Washer	4	4					
平垫 Flat Washer	4	4					
螺母 Nut	M4	4	4				
隔弧板 Phase Barrier		4	6				

必要工具 Necessary Tools

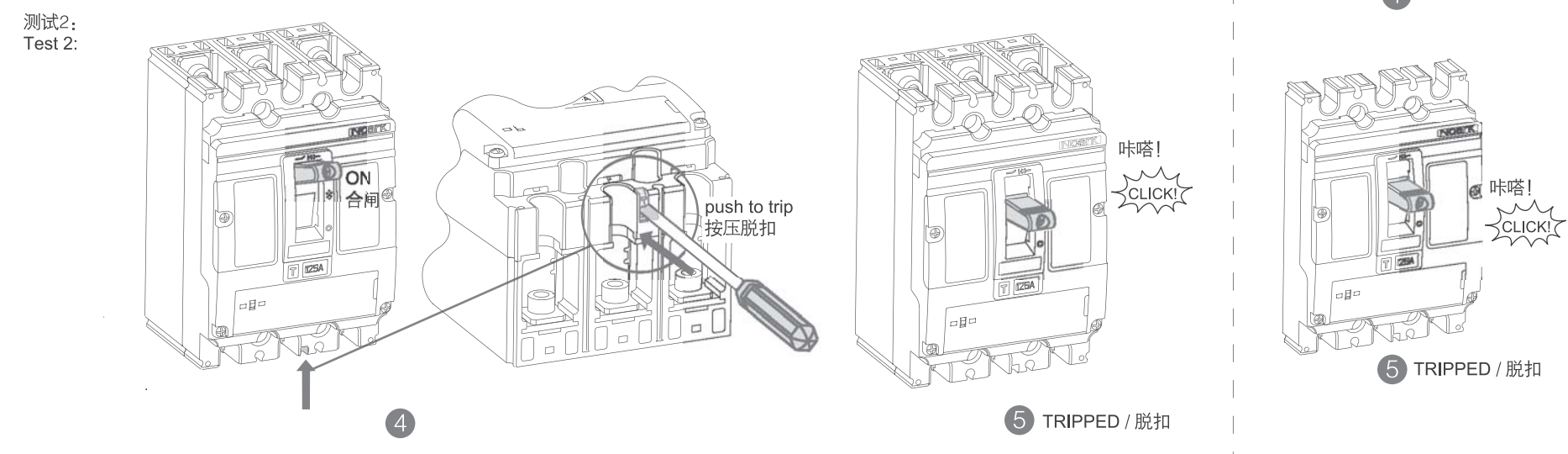
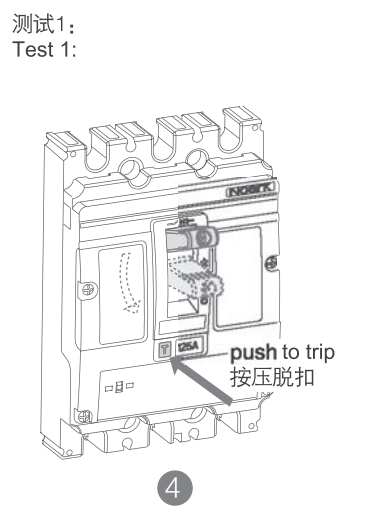
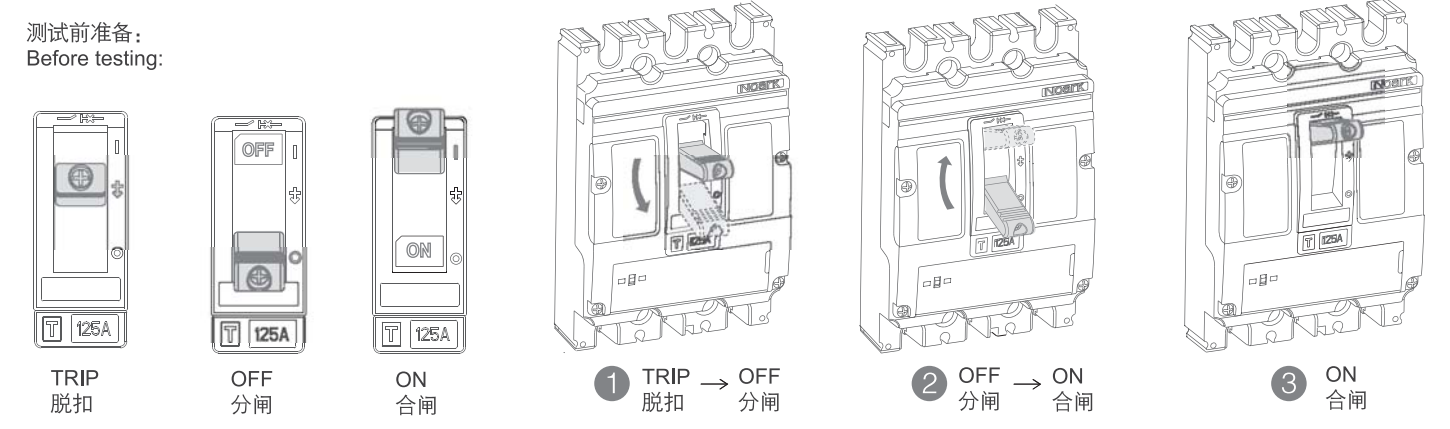
六角扳手 Hex key	螺丝刀 Screw-driver
mm	mm



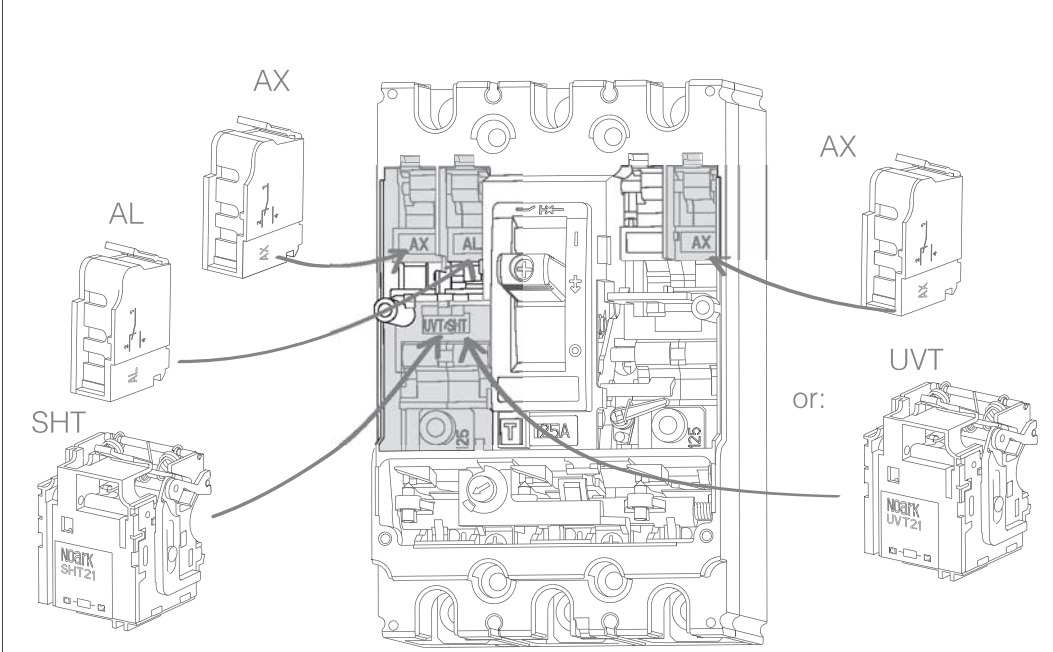
注意:
(1) 若装入的是欠压脱扣器时, 应使脱扣器先通电, 断路器才能再扣及合闸。
(2) 欠压脱扣器与分励脱扣器不能同时安装。

Notice:
1.If under-voltage release is installed, make sure it is energized before relatch and close the circuit-breaker.
2.The under-voltage release and shunt release can not be installed at the same time.

A 操作测试 Operating Test



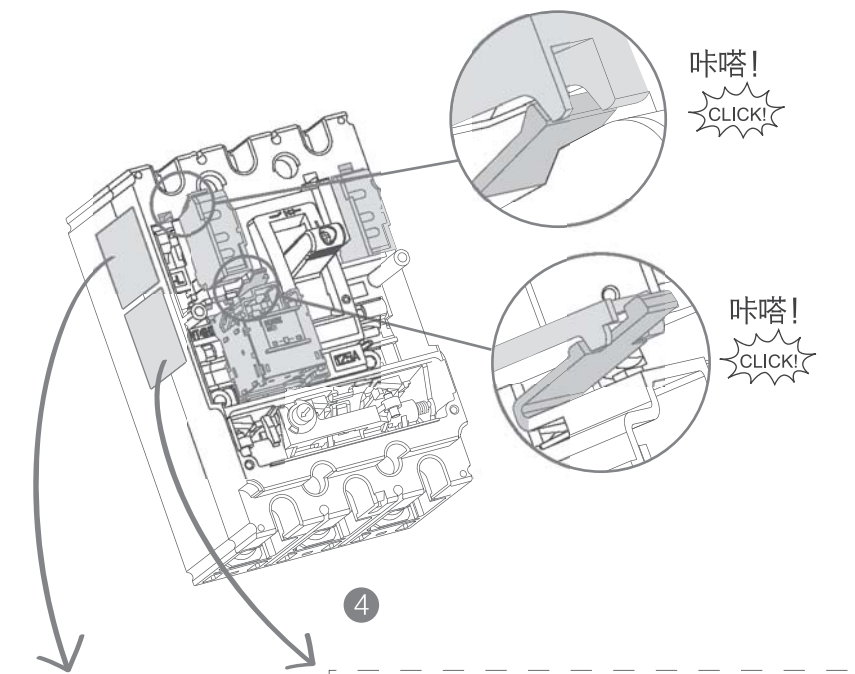
B 内部附件及安装 Internal Accessories & Installation



AX	合闸 ON	分闸 OFF	分、合闸 OFF & ON	自由脱扣 TRIP
AX	AX12 — AX11	AX12 — AX11	AL92 — AL91	AL92 — AL91
AL		AX14 —	AL94 —	AL94 —

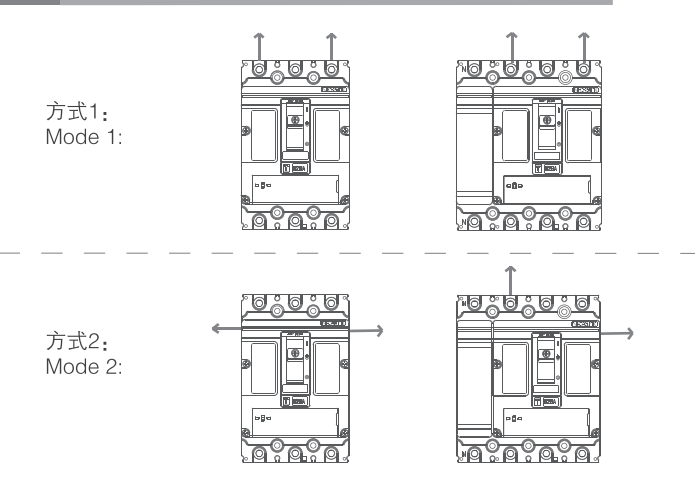
5

<input checked="" type="checkbox"/> AX1	11	12	14
<input type="checkbox"/> AX2	21	22	24
<input type="checkbox"/> AX3	31	32	34
<input type="checkbox"/> AX4	41	42	44
<input type="checkbox"/> AL	91	92	94
<input type="checkbox"/> SDE	81	82	84

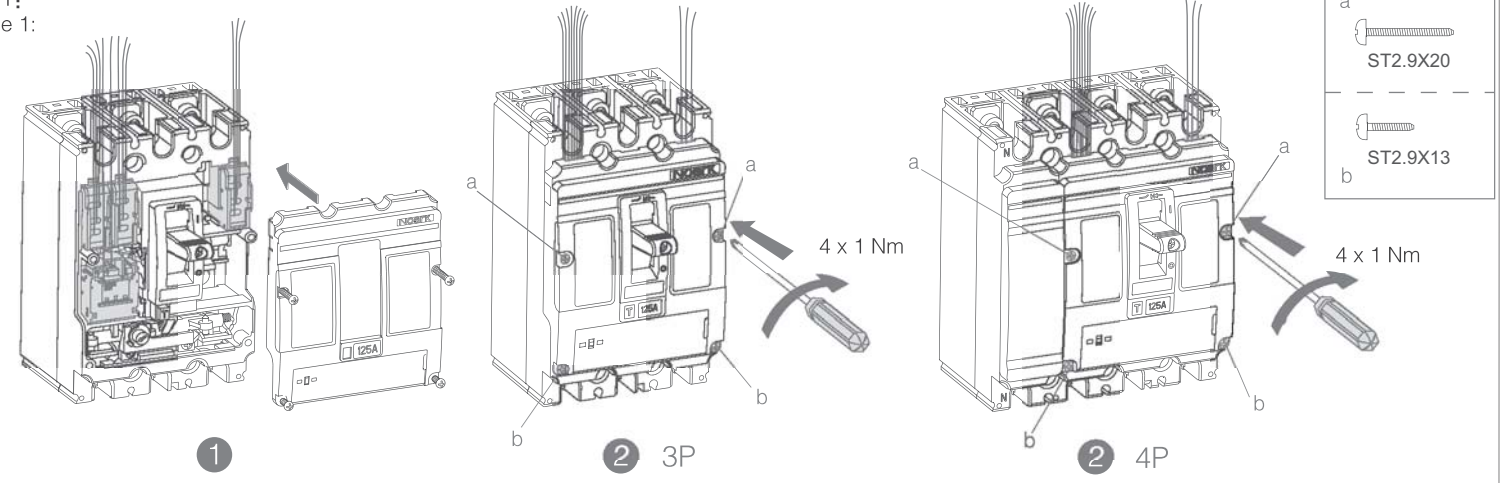


辅助(报警)触头接线图 AX(AL) Wiring Diagram	分励脱扣器接线图 SHT Wiring Diagram	欠压脱扣器接线图 UVT Wiring Diagram
<ul style="list-style-type: none"> AX1 11 12 14 AX2 21 22 24 AX3 31 32 34 AX4 41 42 44 AL 91 92 94 SDE 81 82 84 	<ul style="list-style-type: none"> AC 380V-415V AC 220V-240V AC 110V AC 48V DC 220V DC 110V-120V DC 48V DC 24V 	<ul style="list-style-type: none"> AC 380V-415V AC 220V-240V AC 110V AC 48V DC 220V DC 110V-120V DC 48V DC 24V

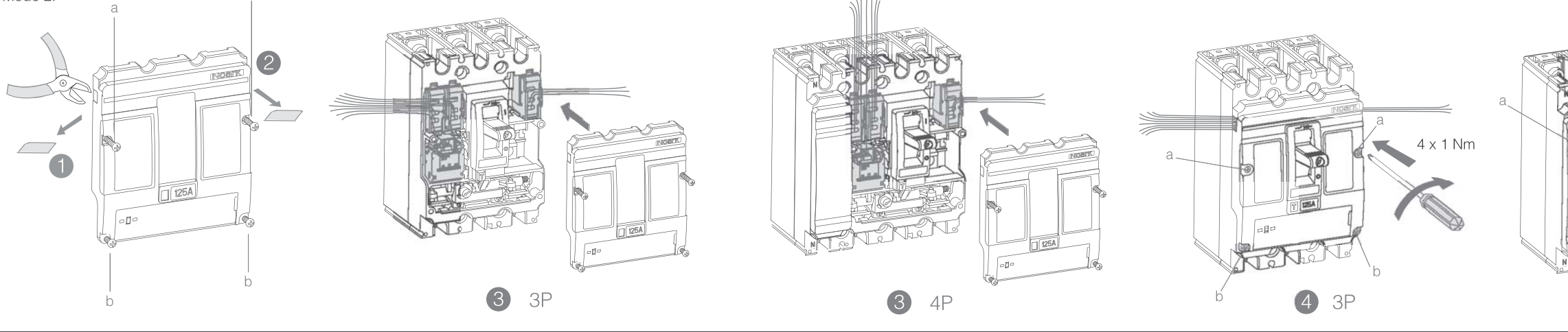
C 内部附件走线 Internal Accessories Wiring



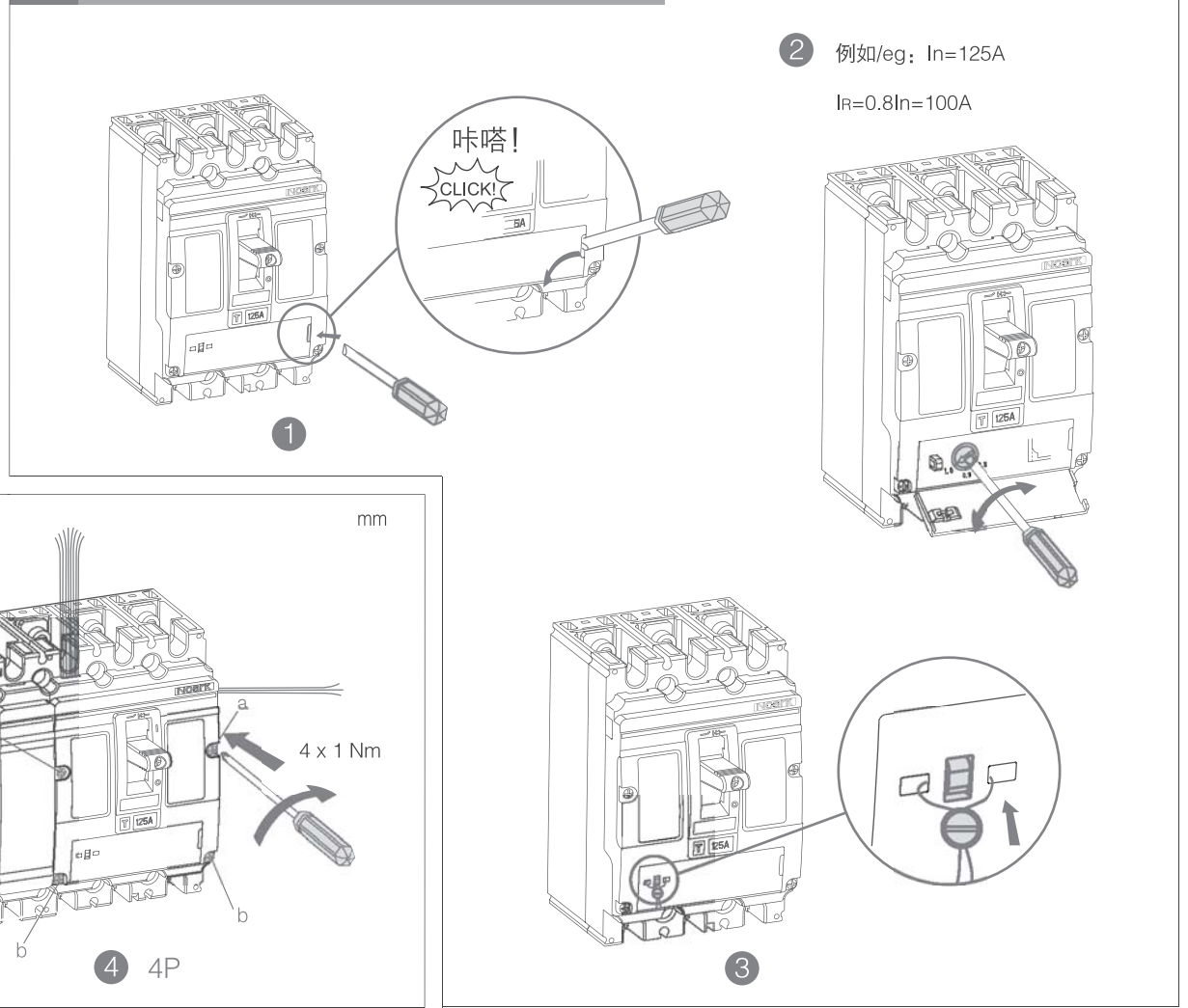
方式1: Mode 1:



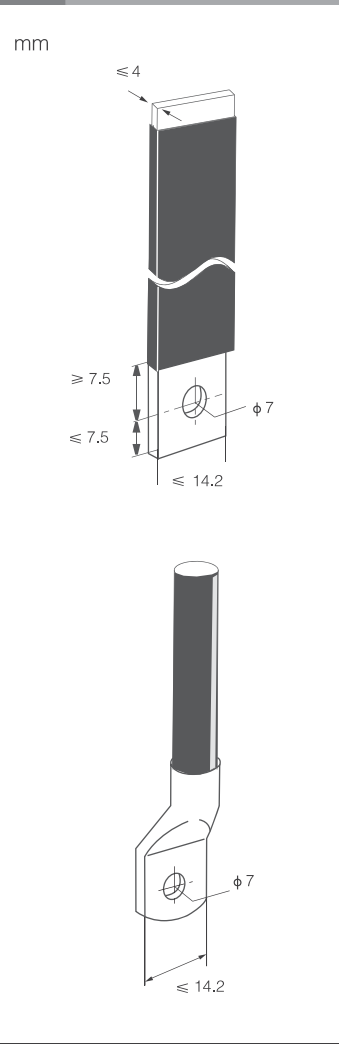
方式2: Mode 2:



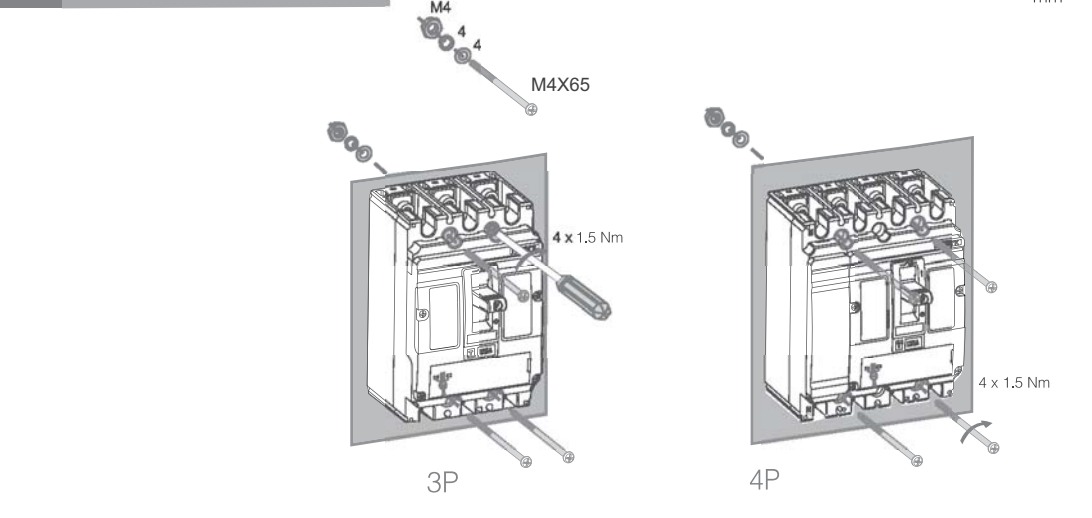
D 参数设置、铅封 Parameters Setting & Sealing



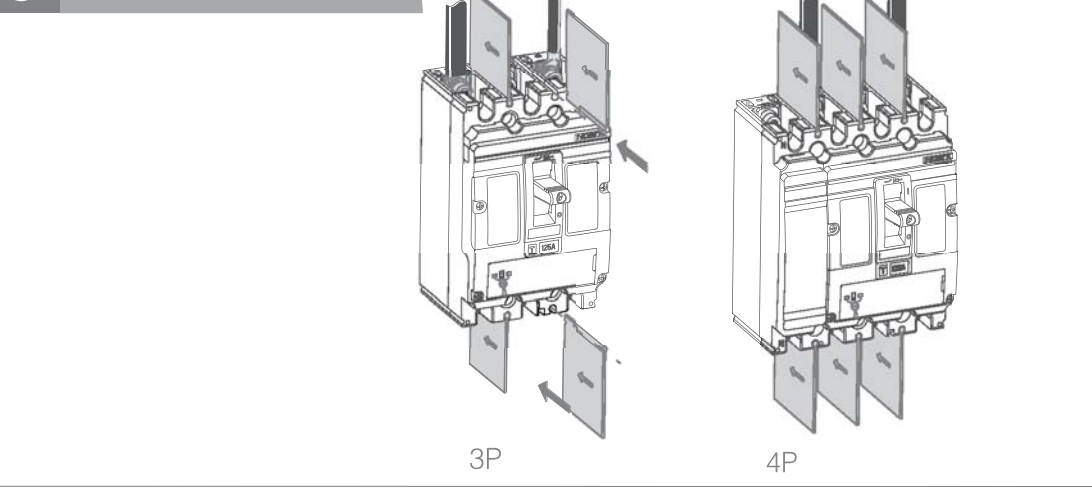
E 导线 Lug Bus-bar



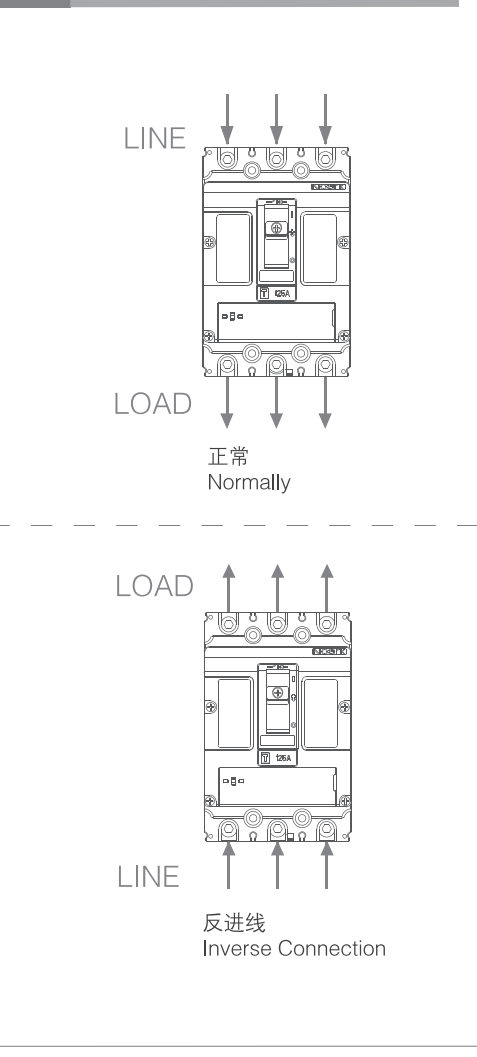
F 安装断路器 Installation



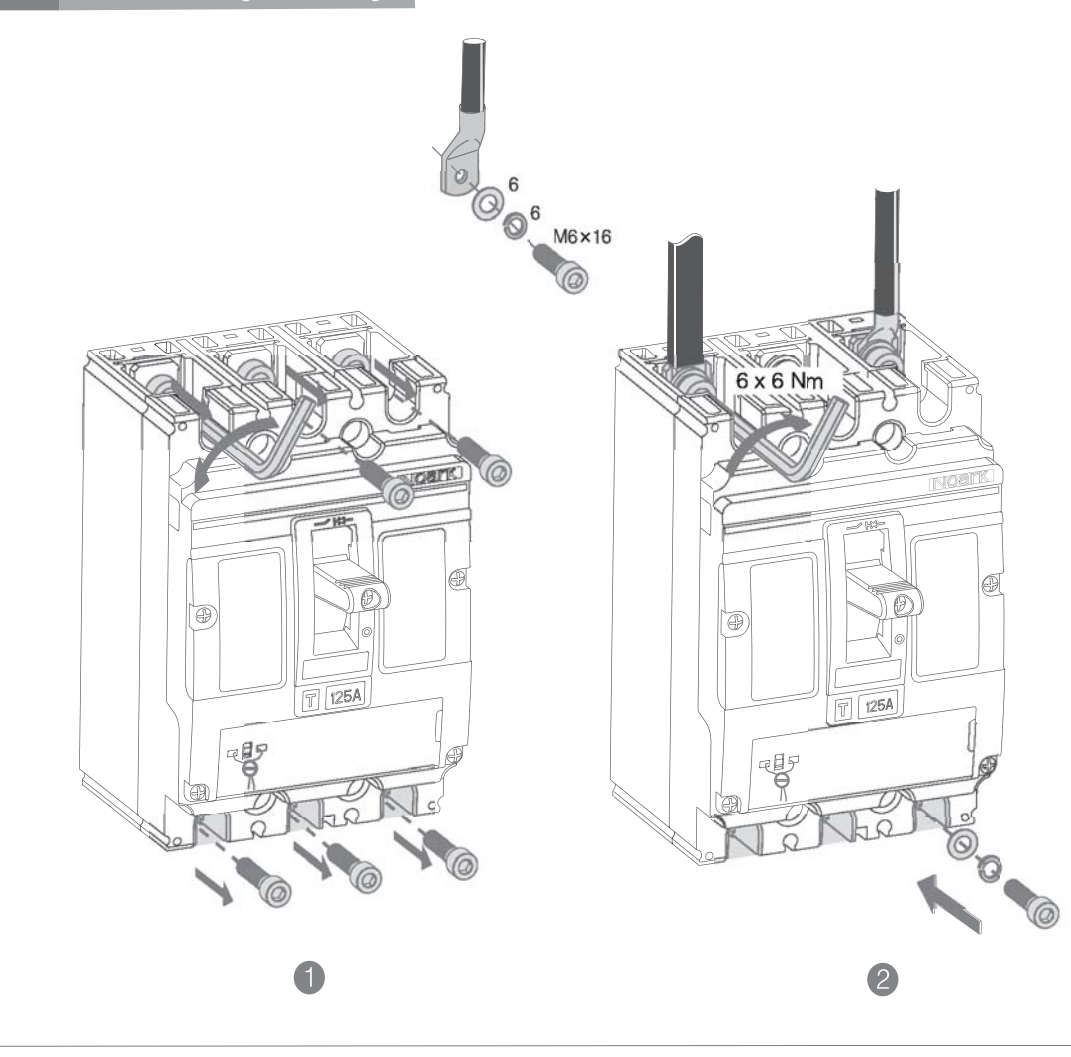
G 安装隔板 Phase Barrier



H 进线方式 Connecting Type



I 导线连接 Wiring Connecting



J 降容曲线及参数

温度降容参数表

产品型号	环境温度	-25℃	-15℃	-5℃	0℃	10℃	20℃	30℃	40℃	50℃	60℃	70℃
Ex9M1	16A	20.2	19.8	19.4	19.2	18.4	17.6	16.8	16	15.2	14.4	13.6
	20A	26.5	25.5	24.5	24	23	22	21	20	19	18	17
	25A	33	32	30.6	30	28	27	26	25	24	22	21
	32A	42	41	39	38	37	35	33	32	30	28	27
	40A	53	51	49	48	46	44	42	40	38	36	34
	50A	66	64	61	60	57.5	55	52.5	50	47.5	45	42.5
Ex9M1	63A	83	80	77	75	72	69	66	63	60	56	53
	80A	106	102	98	96	92	88	84	80	76	72	68
	100A	132	127	122	120	115	110	105	100	95	90	85
	125A	165	159	153	150	144	137	131	125	119	112	106

海拔降容参数表

海拔高度2000m以下对断路器性能无显著影响。超过这个高度，必须考虑到介电强度的下降和空气变冷因素。下表给出了海拔高度2000m以上的修正值，分断能力保持不变。

海拔高度 m	2000 m	3000 m	4000 m	5000 m
额定工作电流 I_n	$1 \times I_n$	$0.96 \times I_n$	$0.93 \times I_n$	$0.9 \times I_n$
额定工作电压 U_e (V)	690	550	480	420
额定绝缘电压 U_i (V)	800	750	660	550
介电性能 (V)	3000	2500	2100	1800
额定绝缘冲击电压 U_{imp}	8	8	8	8

海拔降容曲线

最大工作电压 (V) 700

600

500

400

2000 3000 4000 5000 海拔 (m)

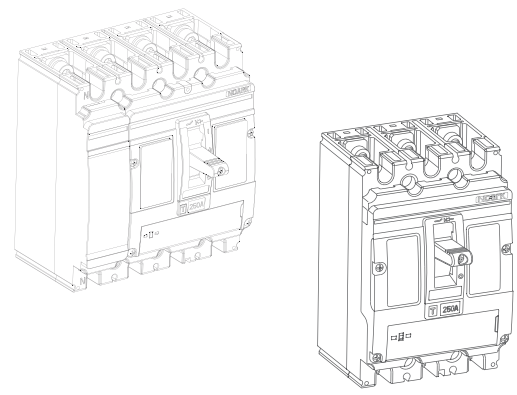
上海诺雅克电气有限公司
NOARK Electric (Shanghai) Co., Ltd.
地址: 上海市松江工业区松开V-7A-1号地块
Add: Block V-7A-1, Songjiang Industrial Zone, Shanghai
电话/Tel: 021-3779 1111
客服热线/Customer Service Hotline: 400-1092-111

采用环保纸印刷
Printed with environment-friendly paper

本说明书解释权归NOARK所有。
The expression right of the instructions are owned by NOARK.

Ex9M2 / Ex9M2 SD

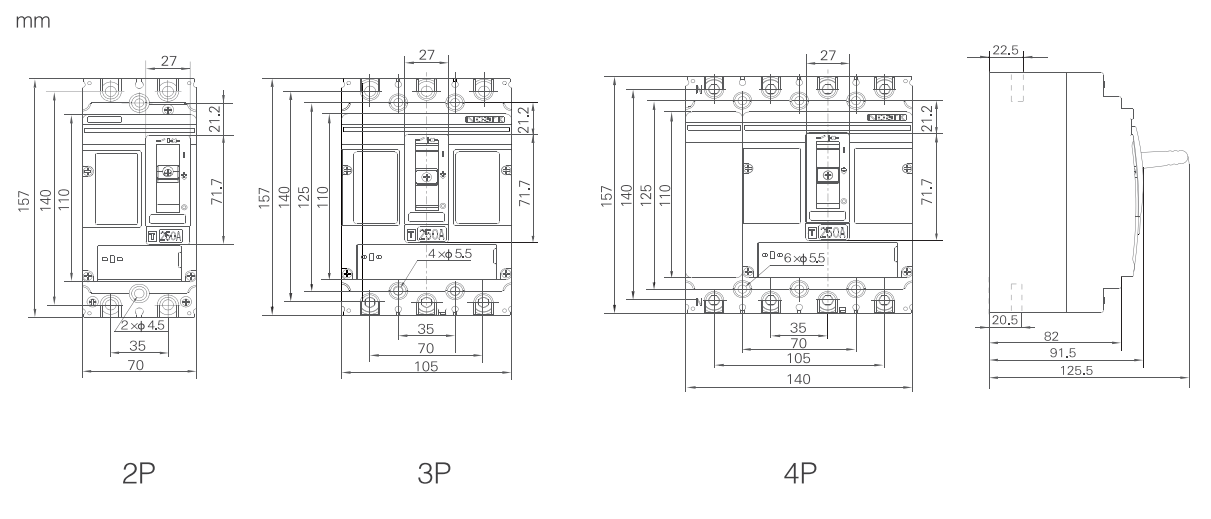
Ex9M2 塑料外壳式断路器
Ex9M2 Moulded Case Circuit Breaker
Ex9M2 SD 隔离开关 (交流)
Switch Disconnecter (AC)



未按本说明书要求操作造成的不良后果，制造商将不承担责任。
The manufacturer assumes no responsibility for unfavourable consequence resulting from the non-application or incorrect application of the instructions provided herein.



外形尺寸 Outline Dimension

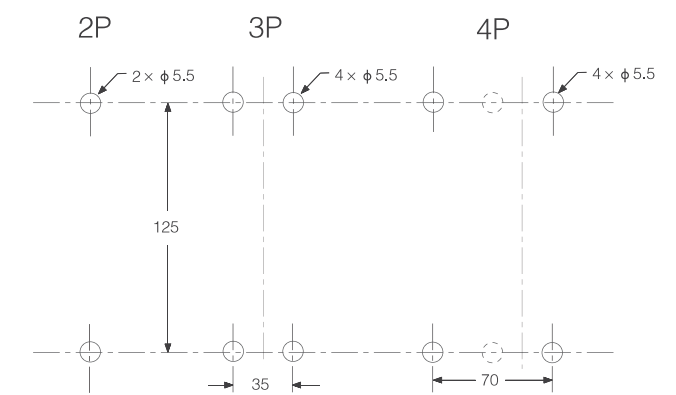


铭牌 Nameplate



在此包装盒中除产品本体上所粘贴的铭牌外，还附加了手操、电操粘贴用的综合铭牌。客户若需使用手操或电操，其粘贴方法详见相关说明书。
Except the existing nameplate on the product, we also prepare comprehensive nameplates for your manual use. Customers can use it in according to the instruction as needed.

安装尺寸 Installation Dimension



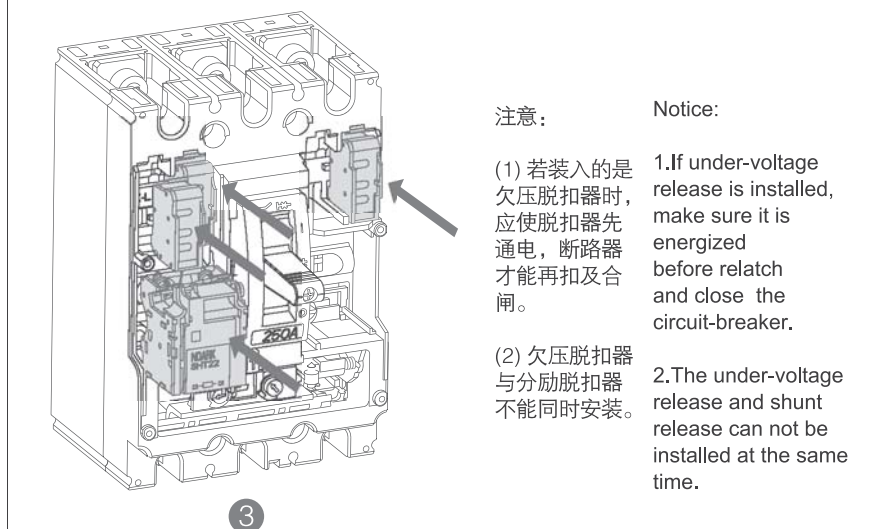
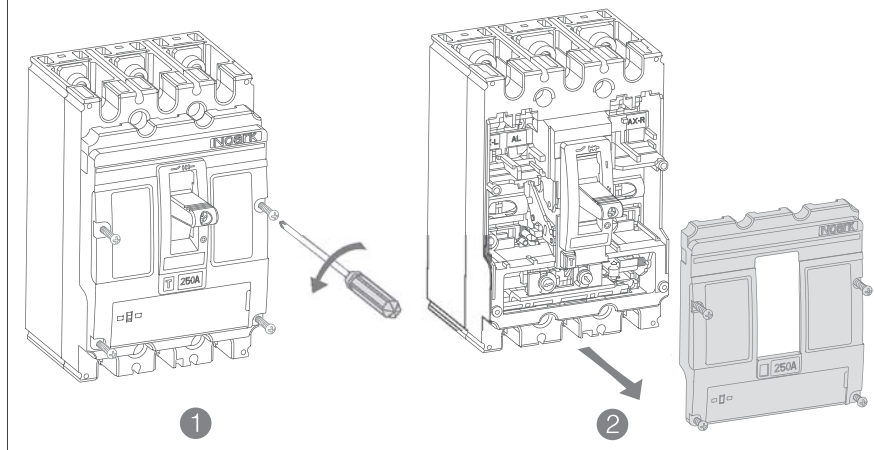
标配附件及必要工具 Standard Accessories & Necessary Tools

标配附件 Standard Accessories

名称 Appellation	规格 Model	数量 Number		示意图 Figure			
		3P	4P	安装螺钉 Installation Bolt	弹垫 S-Washer	平垫 F-Washer	螺母 Nut
安装螺钉 Installation Bolt	M5 × 70	4	4				
弹垫 Spring Washer	5	4	4				
平垫 Flat Washer	5	4	4				
螺母 Nut	M5	4	4				
隔弧板 Phase Barrier		4	6				

必要工具 Necessary Tools

六角扳手 Hex key	螺丝刀 Screw-driver
mm 	mm ≤ φ4 φ4.5-5

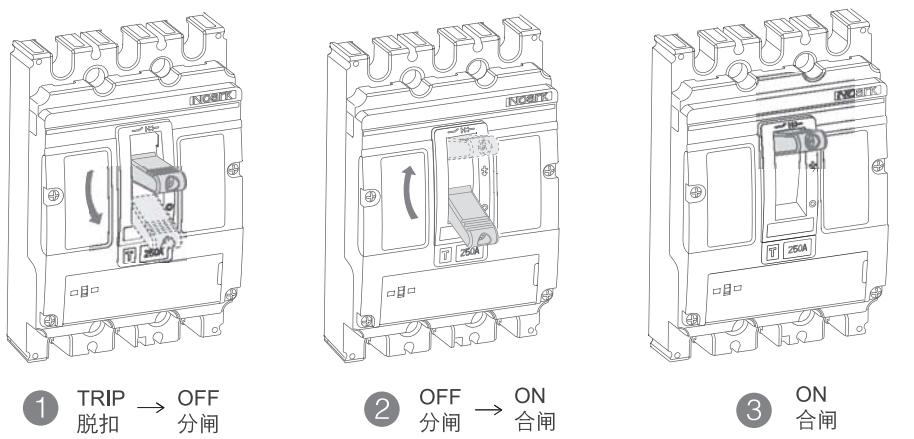
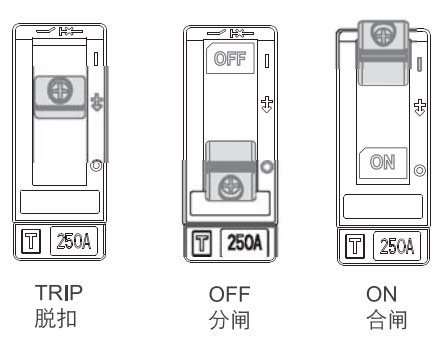


注意:
(1) 若装入的是欠压脱扣器时, 应使脱扣器先通电, 断路器才能再扣及合闸。
(2) 欠压脱扣器与分励脱扣器不能同时安装。

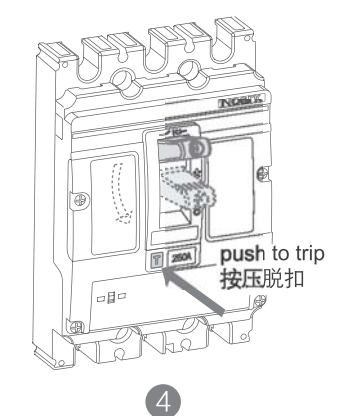
Notice:
1.If under-voltage release is installed, make sure it is energized before relatch and close the circuit-breaker.
2.The under-voltage release and shunt release can not be installed at the same time.

A 操作测试 Operating Test

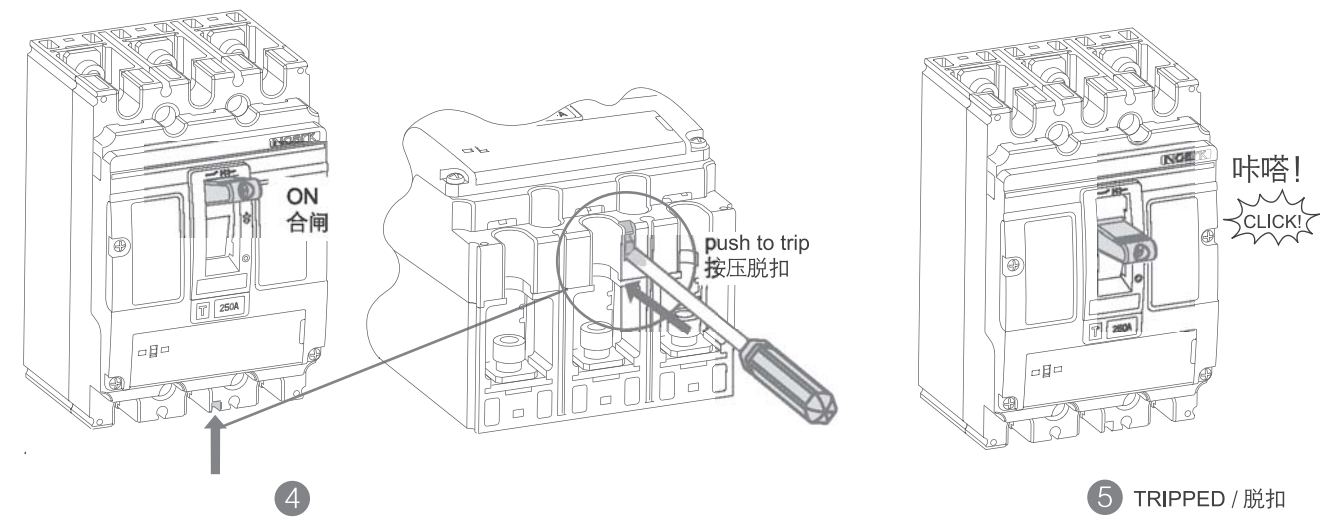
测试前准备: Before testing:



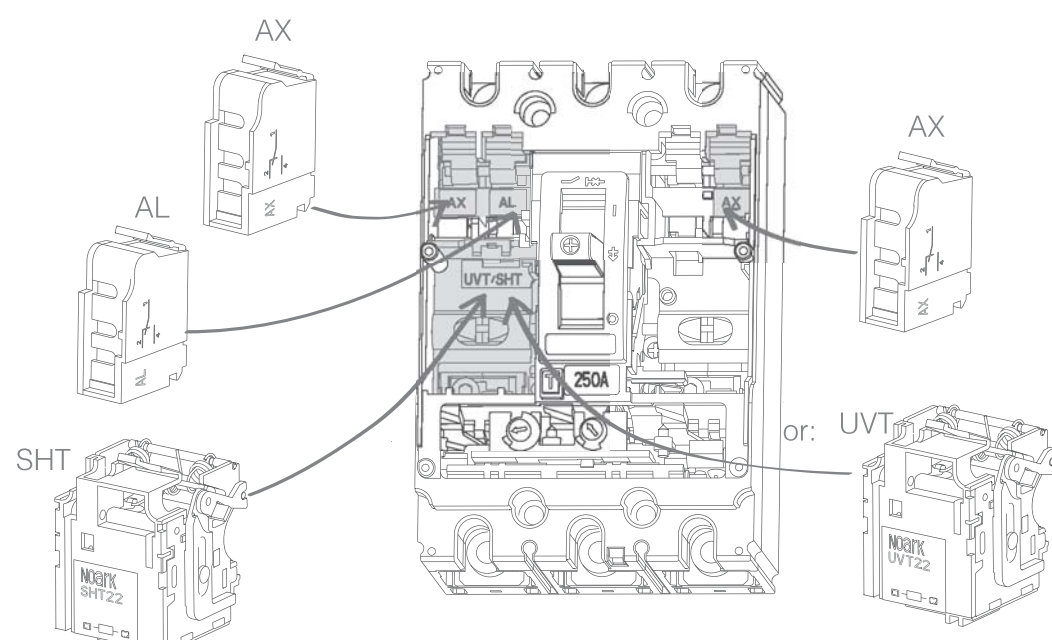
测试1: Test 1:



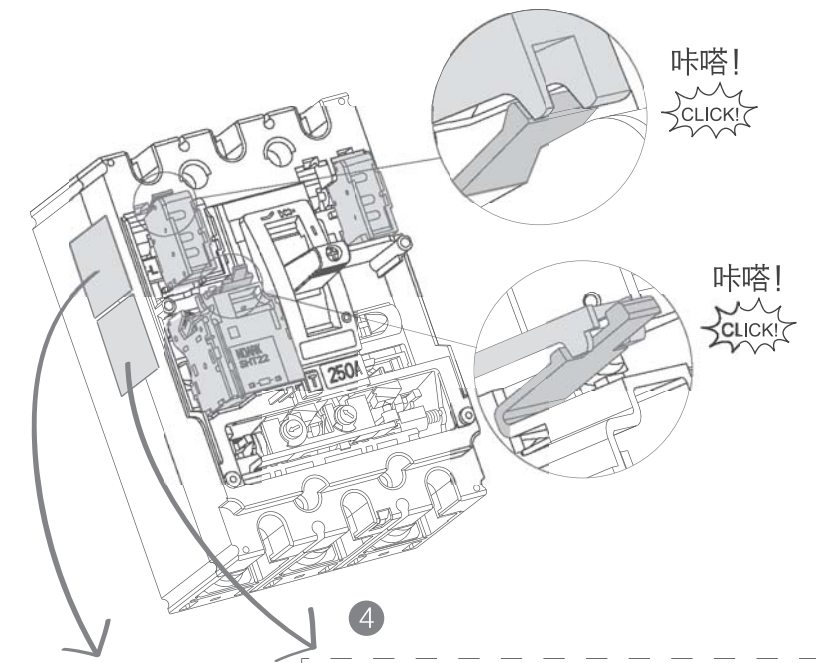
测试2: Test 2:



B 内部附件及安装 Internal Accessories & Installation

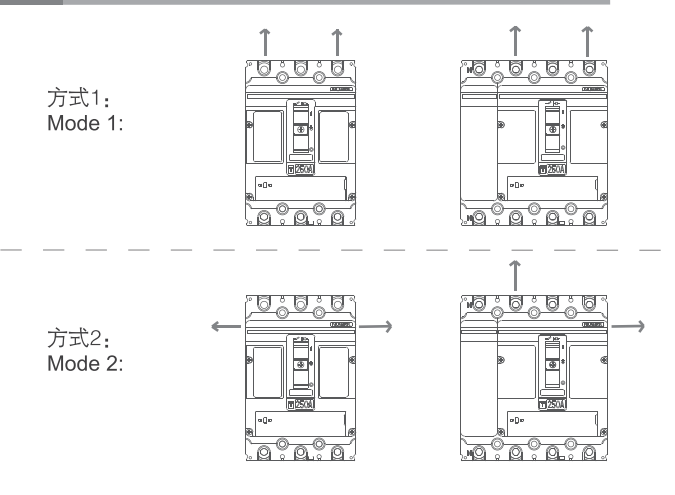


AX	合闸 ON	AX12	AX14	AX11
AX	分闸 OFF	AX12 <td>AX14 <td>AX11</td> </td>	AX14 <td>AX11</td>	AX11
AL	分、合闸 OFF & ON	AL92 <td>AL94 <td>AL91</td> </td>	AL94 <td>AL91</td>	AL91
AL	自由脱扣 TRIP	AL92 <td>AL94 <td>AL91</td> </td>	AL94 <td>AL91</td>	AL91

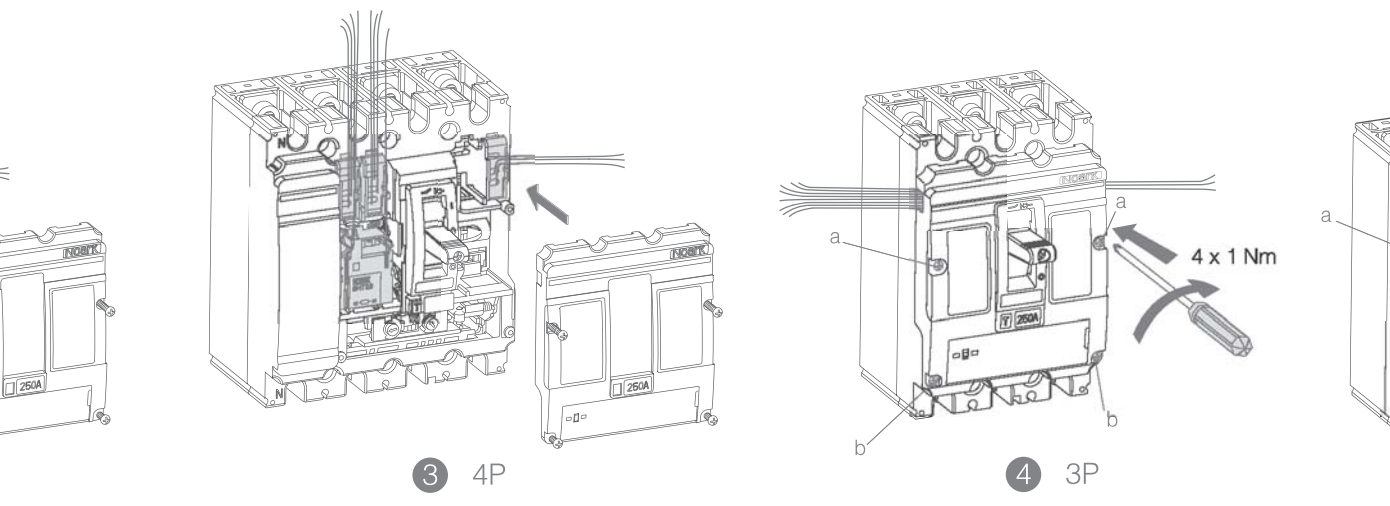
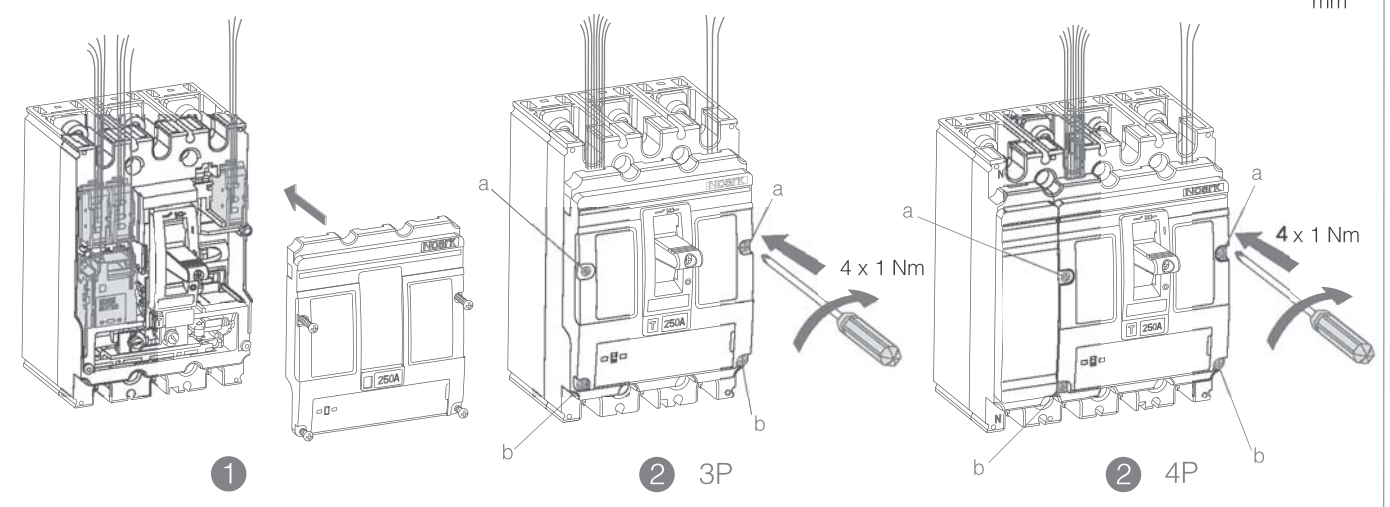
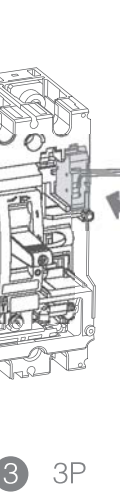
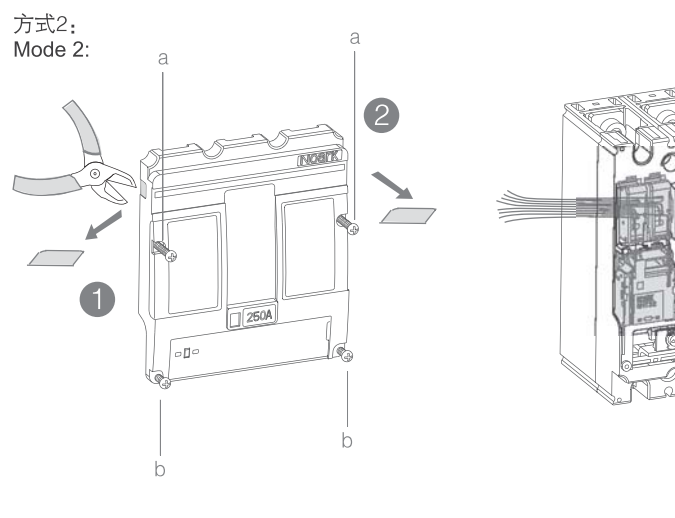
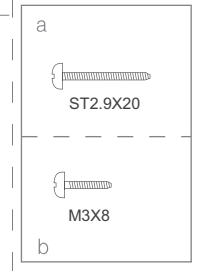


辅助(报警)触头接线图 AX(AL) Wiring Diagram	分励脱扣器接线图 SHT Wiring Diagram	欠压脱扣器接线图 UVT Wiring Diagram
<ul style="list-style-type: none"> AX1 11 12 14 AX2 21 22 24 AX3 31 32 34 AX4 41 42 44 AL 91 92 94 SDE 81 82 84 	<ul style="list-style-type: none"> AC 380V~415V AC 220V~240V AC 110V AC 48V DC 220V DC 110V~120V DC 48V DC 24V 	<ul style="list-style-type: none"> AC 380V~415V AC 220V~240V AC 110V AC 48V DC 220V DC 110V~120V DC 48V DC 24V

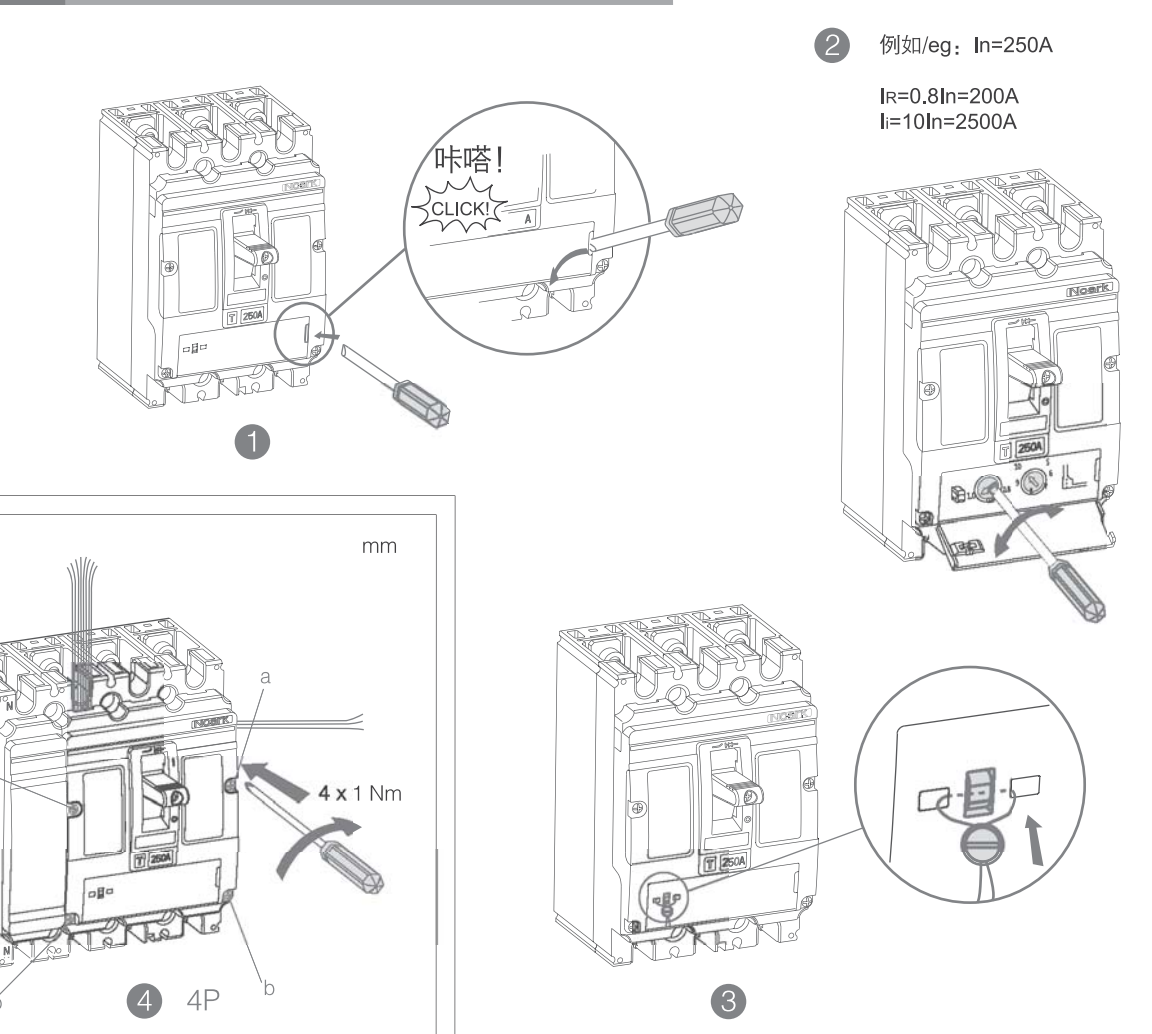
C 内部附件导线 Internal Accessories Wiring



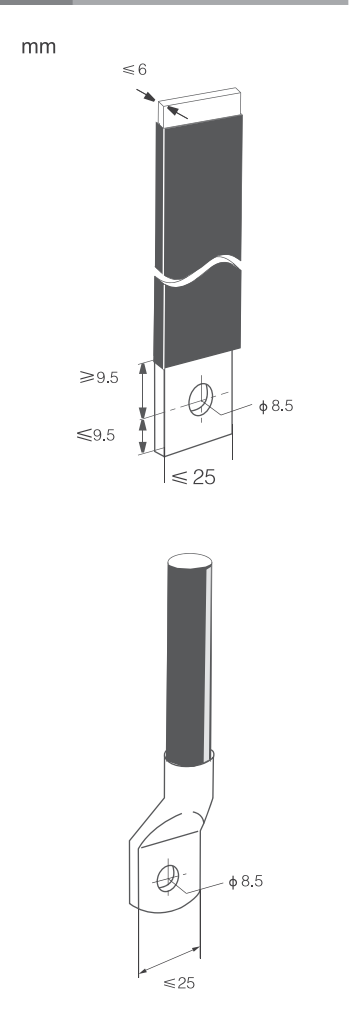
方式1: Mode 1:



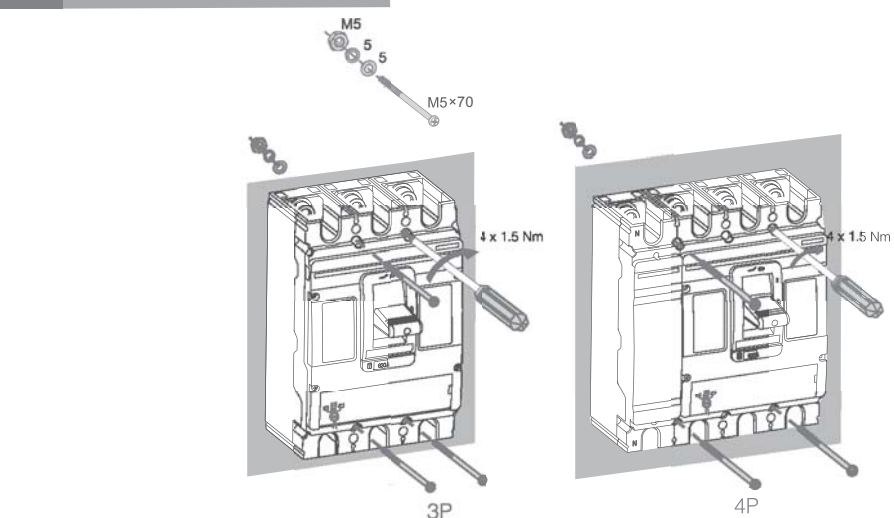
D 参数设置、铅封 Parameters Setting & Sealing



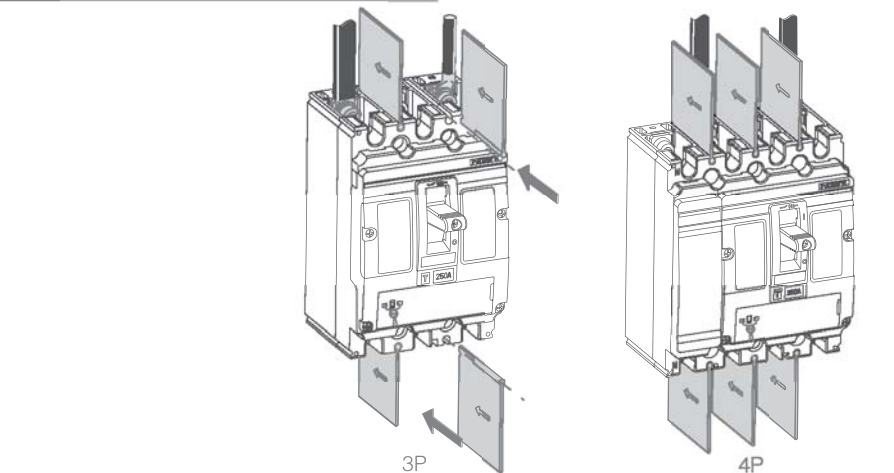
E 导线 Lug Bus-bar



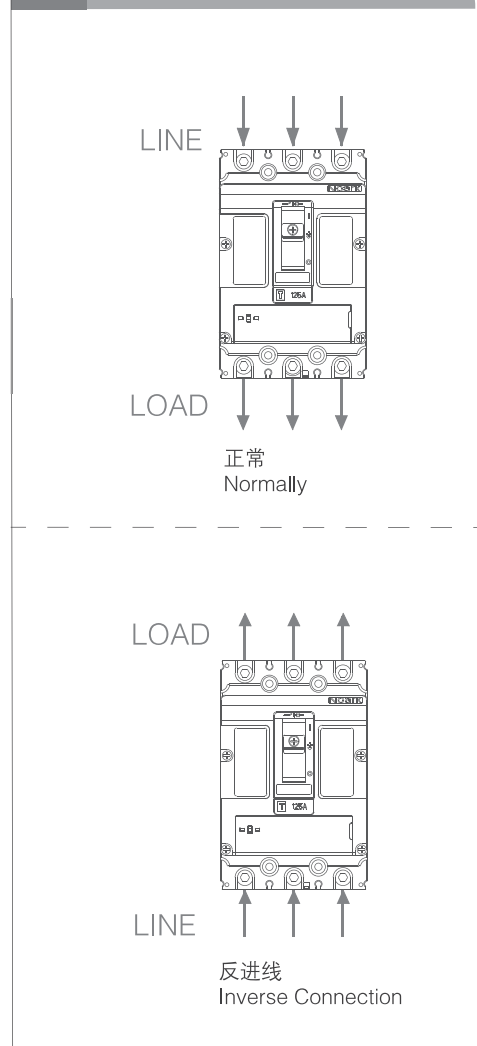
F 安装断路器 Installation



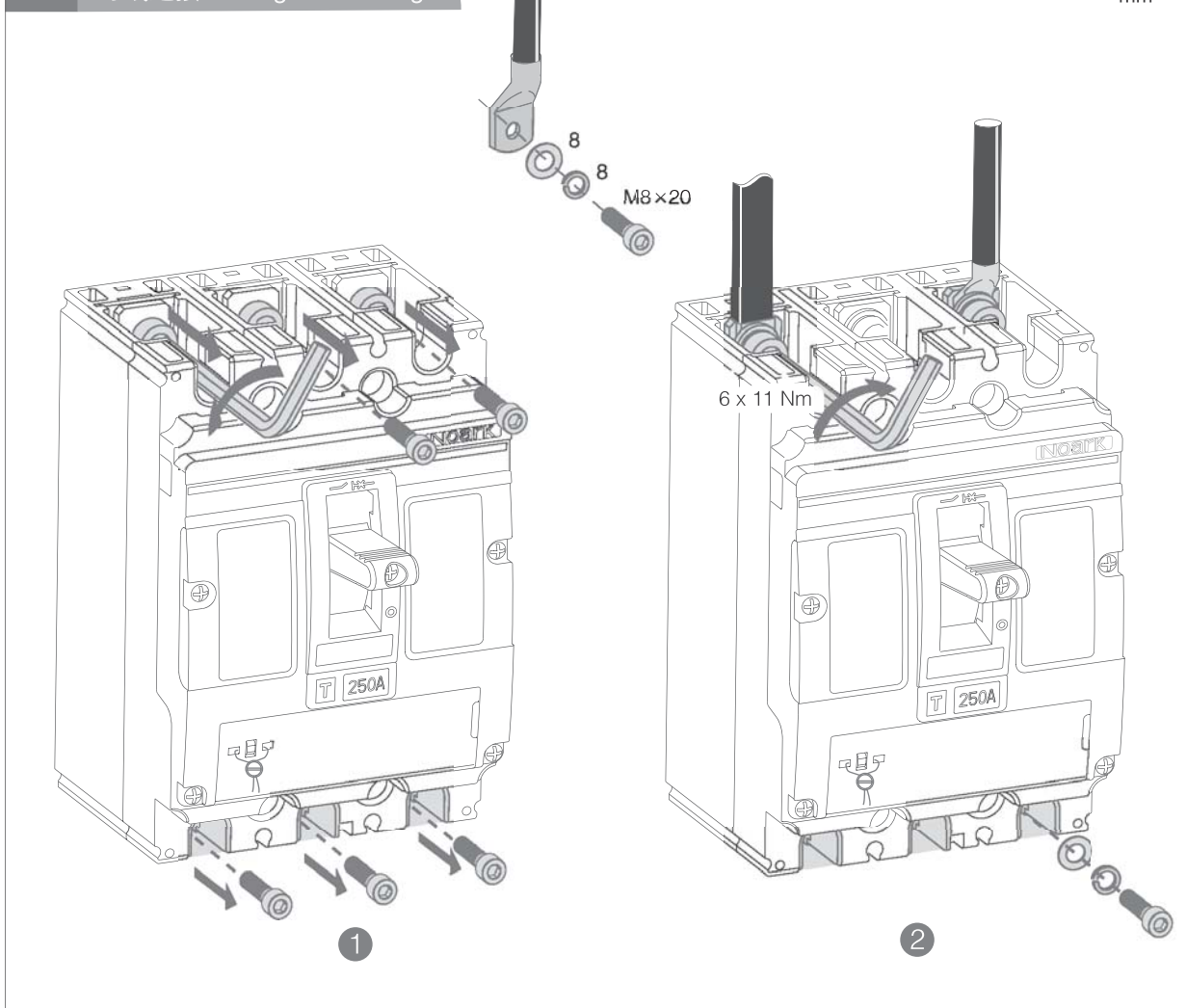
G 安装隔板 Phase Barrier



H 进线方式 Connecting Type



I 导线连接 Wiring Connecting



J 降容曲线及参数 Derating

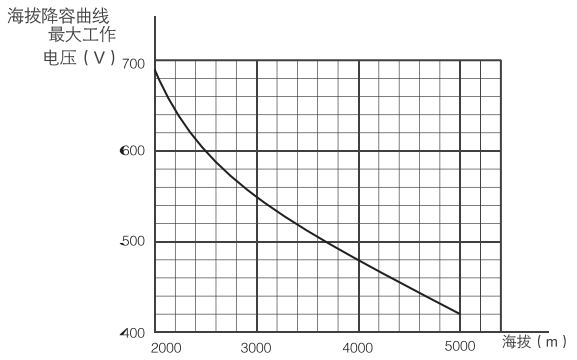
温度降容参数表

产品型号	额定电流	环境温度										
		-25°C	-15°C	-5°C	0°C	10°C	20°C	30°C	40°C	50°C	60°C	70°C
Ex9M2	125A	165	159	153	150	144	137	131	125	119	112	106
	160A	212	204	196	192	184	176	168	160	152	144	136
	180A	238.5	229.5	220.5	216	207	198	189	180	171	162	153
	200A	265	255	245	240	230	220	210	200	190	180	170
	225A	300	288	276	270	259	247.5	236	225	214	202.5	191
	250A	332.5	319.5	306.5	300	287.5	275	262.5	250	237.5	225	212.5

海拔降容参数表

海拔高度2000m以下对断路器性能无显著影响。超过这个高度，必须考虑到介电强度的下降和空气变冷因素。下列表格给出了海拔高度2000m以上时的修正值，分断能力保持不变。

海拔高度 m	2000 m	3000 m	4000 m	5000 m
额定工作电流 I_n	$1 \times I_n$	$0.96 \times I_n$	$0.93 \times I_n$	$0.9 \times I_n$
额定工作电压 U_e (V)	690	550	480	420
额定绝缘电压 U_i (V)	800	750	660	550
介电性能 (V)	3000	2500	2100	1800
额定绝缘冲击电压 U_{imp}	8	8	8	8

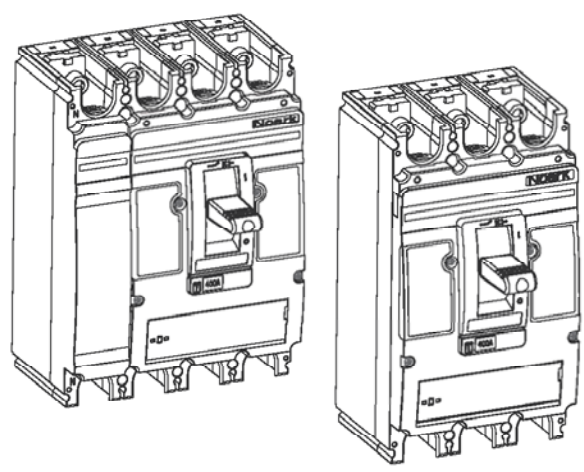


上海诺雅克电气有限公司
 NOARK Electric (Shanghai) Co., Ltd.
 地址: 上海市松江工业区松开区V-7A-1号地块
 Add: Block V-7A-1, Songjiang Industrial Zone, Shanghai
 电话/Tel: +86-21-3779 1111
 客服热线/ Customer Service Hotline: 400-1092-111

采用环保纸印刷
 Printed with environment-friendly paper
 本说明书解释权归NOARK所有。
 The expression right of the instructions are owned by NOARK.

Ex9M3/ Ex9M3 SD

Ex9M3塑料外壳式断路器
Ex9M3 Moulded Case Circuit Breaker
Ex9M3 SD 隔离开关 (交流)
Switch Disconnecter

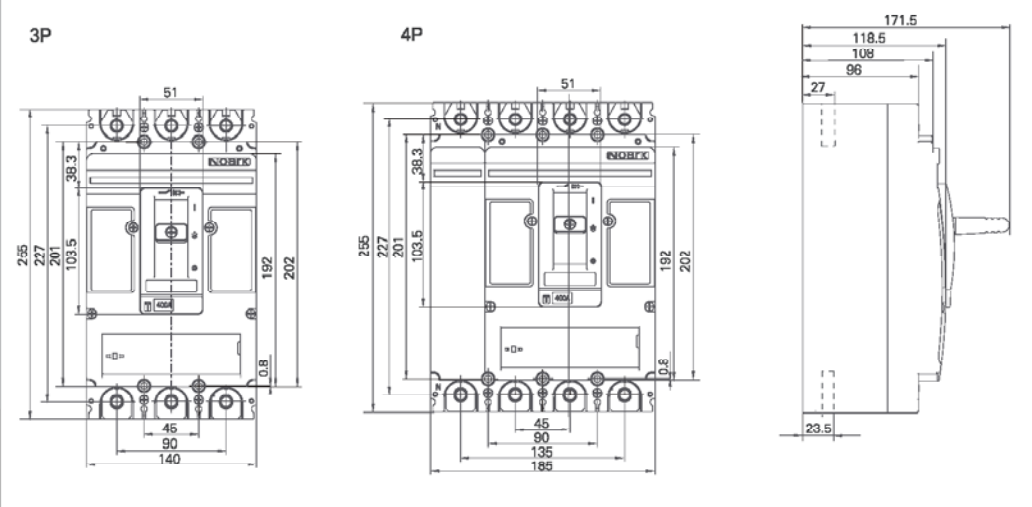


未按本说明书要求操作造成的不良后果, 制造商将不承担责任。

The manufacturer assumes no responsibility for unfavourable consequence resulting from the non-application or incorrect application of the instructions provided herein.



外形尺寸 Outline Dimension



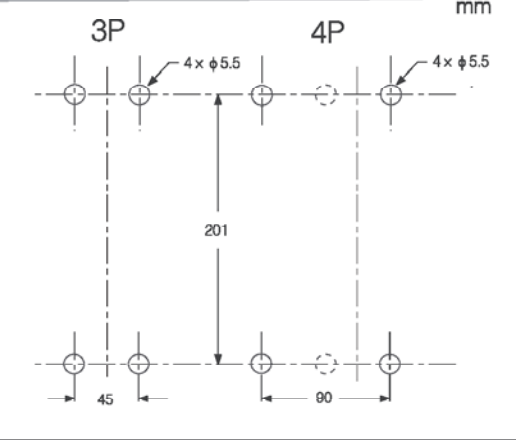
铭牌 Nameplate



在此包装盒中除产品本体上所粘贴的铭牌外, 还附加了手操、电操粘贴用的综合铭牌。客户若需使用手操或电操, 其粘贴方法详见相关说明书。

Except the existing nameplate on the product, we also prepare comprehensive nameplates for your manual use. Customers can use it in according to the instruction as needed.

安装尺寸 Installation Dimension



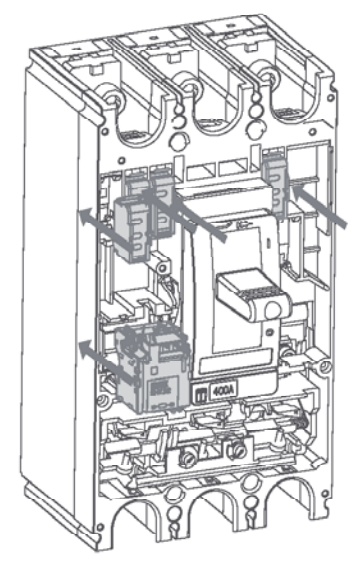
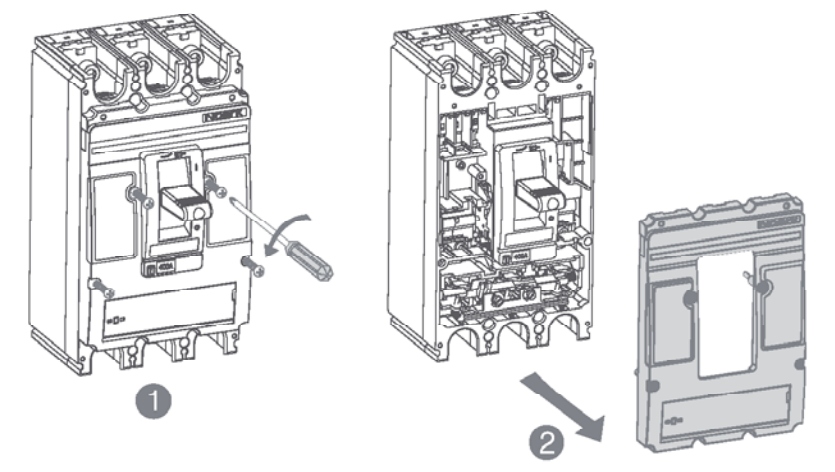
标配附件及必要工具 Standard Accessories & Necessary Tools

标配附件 Standard Accessories

名称 Appellation	规格 Model	数量 Number		示意图 Figure			
		3P	4P	安装螺钉 Installation Bolt	弹垫 S-Washer	平垫 F-Washer	螺母 Nut
安装螺钉 Installation Bolt	M5 x 95	4	4				
弹垫 Spring Washer	5	4	4				
平垫 Flat Washer	5	4	4				
螺母 Nut	M5	4	4				
隔板 Phase Barrier		3	4				
短接排 Short-Link Busbar		1	2				

必要工具 Necessary Tools

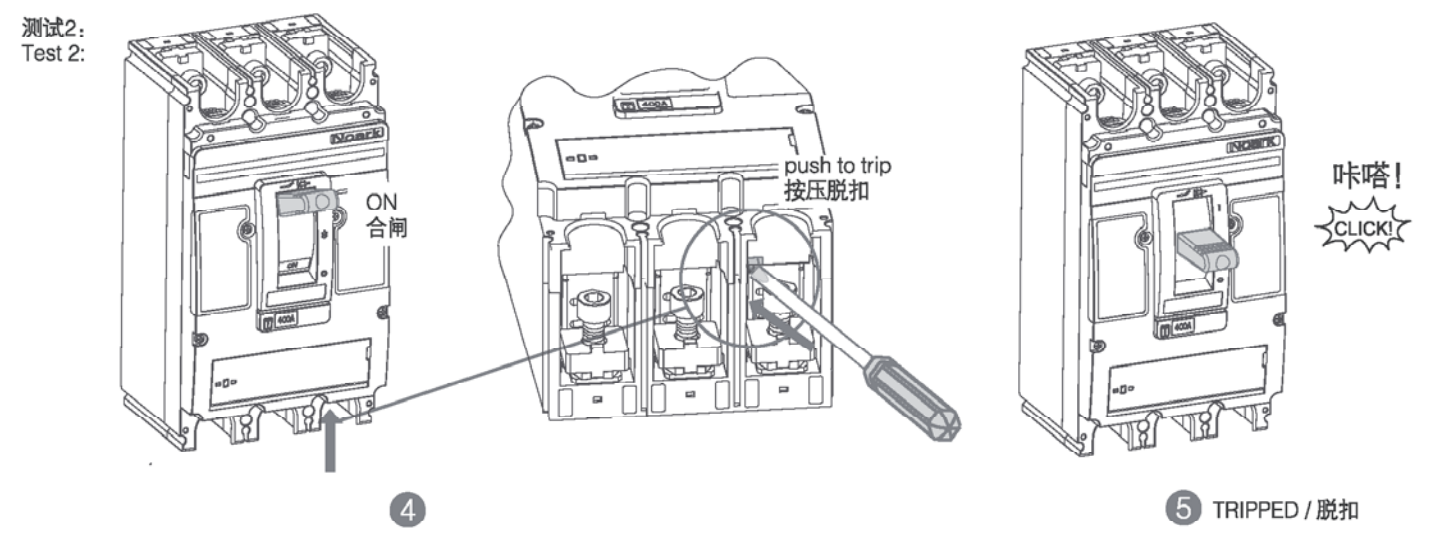
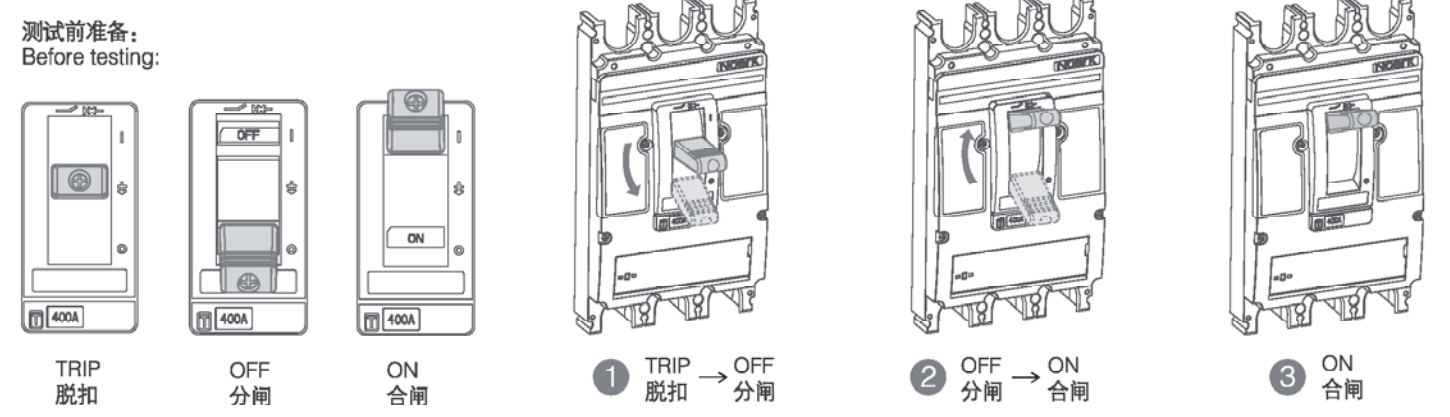
六角扳手 Hex key		螺丝刀 Screw-driver	
mm		mm	
			≤ φ4
			φ4.5-5
			8



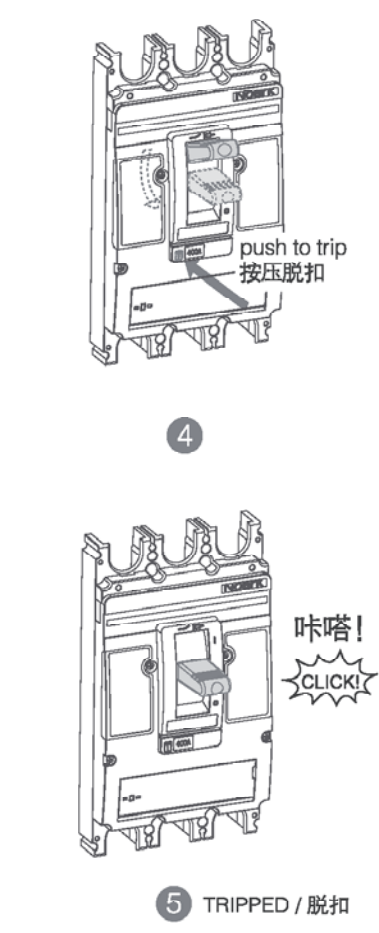
注意:
1. 若装入的是欠压脱扣器时, 应使脱扣器先通电, 断路器才能再扣及合闸。
2. 欠压脱扣器与分励脱扣器不能同时安装。
3. 装分励或欠压脱扣器时, 要往前推动推杆 (如下放大图), 以免破坏推杆。

Notice:
1. If under-voltage release is installed, make sure it is energized before relatch and close the circuit-breaker.
2. The under-voltage release and shunt release can not be installed at the same time.
3. When shunt release or undervoltage release is installed, push forward the pushing bar to avoid damage it (just as the detailed view below).

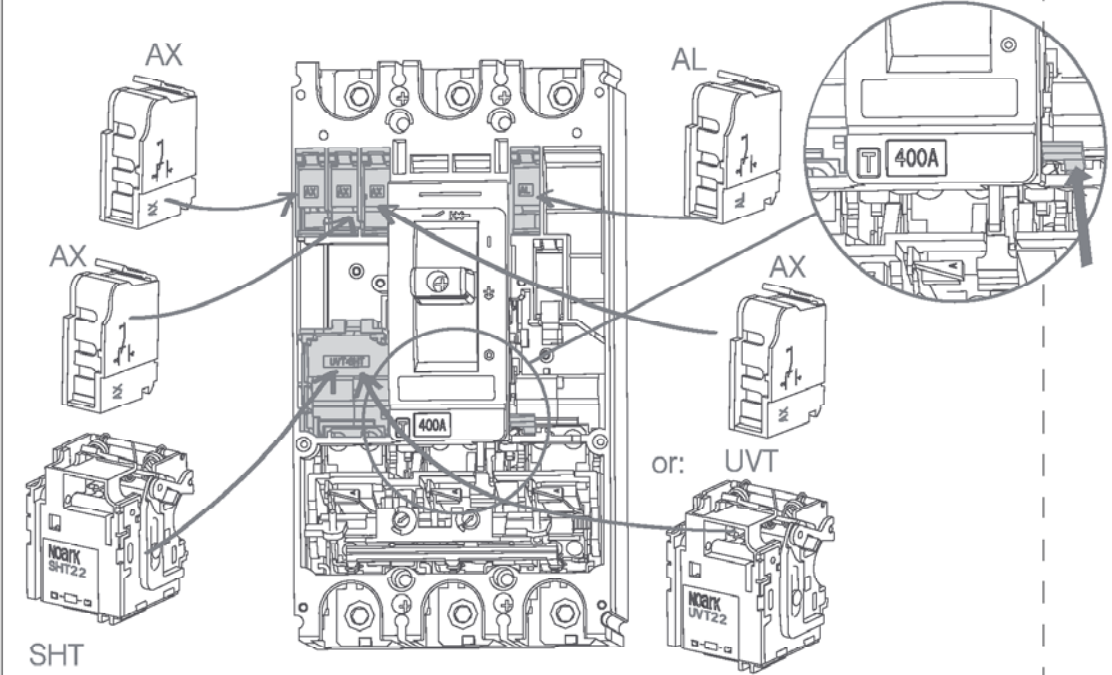
A 操作测试 Operating Test



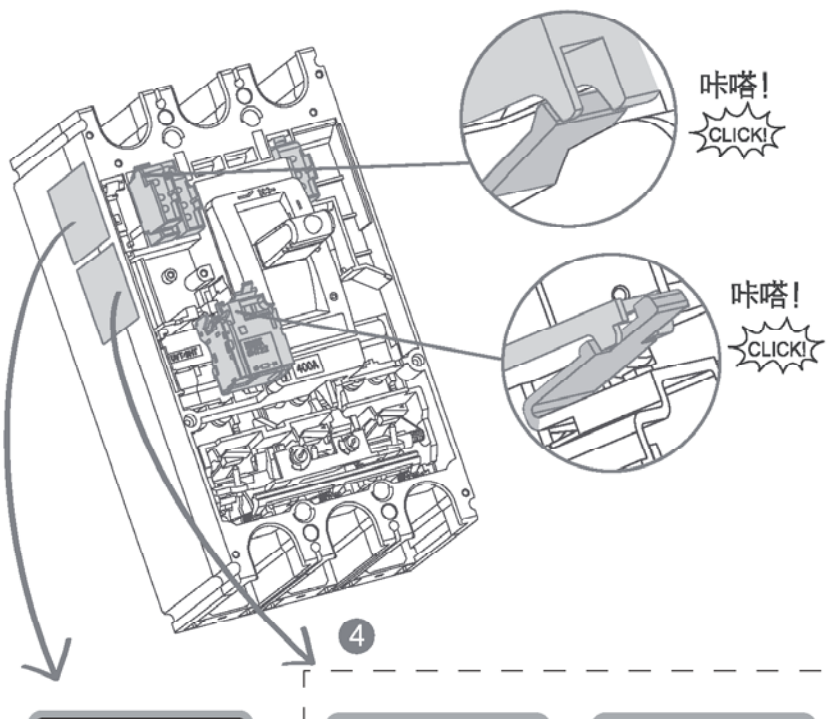
测试1: Test 1:



B 内部附件及安装 Internal Accessories & Installation

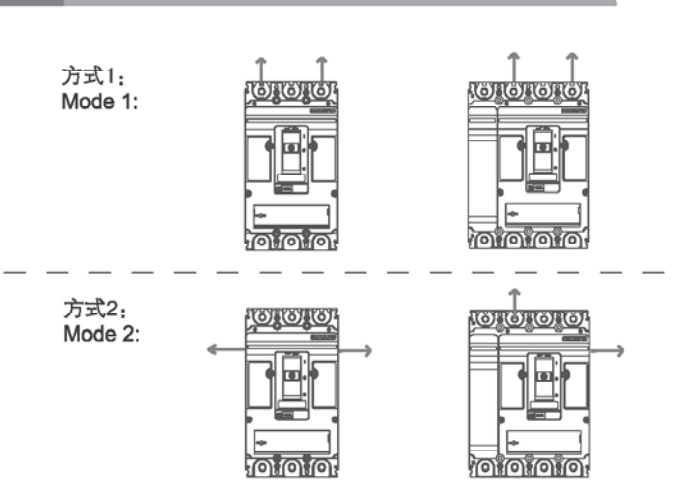


AX	辅助触头 Auxiliary Contact	合闸 ON	AX12 — AX11	AX14 — AX11
AL	报警触头 Alarm Contact	分闸 OFF <td>AX12 — AX11 <td>AX14 — AX11 </td></td>	AX12 — AX11 <td>AX14 — AX11 </td>	AX14 — AX11
SHT	分励脱扣器 Shunt Release	分、合闸 OFF & ON	AL92 — AL91	AL94 — AL91
UVT	欠电压脱扣器 Under-voltage Release	自由脱扣 TRIP	AL92 — AL91	AL94 — AL91

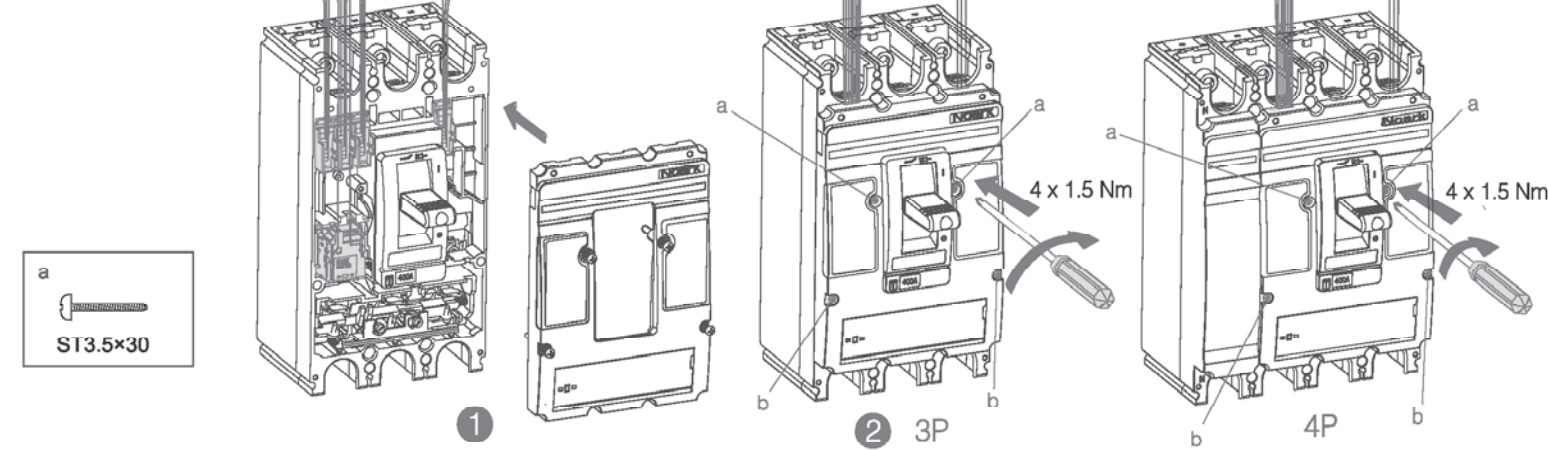


辅助(报警)触头接线图	分励脱扣器接线图	欠电压脱扣器接线图
<ul style="list-style-type: none"> AX1 11 12 14 AX2 21 22 24 AX3 31 32 34 AX4 41 42 44 AL 91 92 94 SDE 81 82 84 	<ul style="list-style-type: none"> AC 380V-415V AC 220V-240V AC 110V AC 48V DC 220V DC 110V-120V DC 48V DC 24V 	<ul style="list-style-type: none"> AC 380V-415V AC 220V-240V AC 110V AC 48V DC 220V DC 110V-120V DC 48V DC 24V

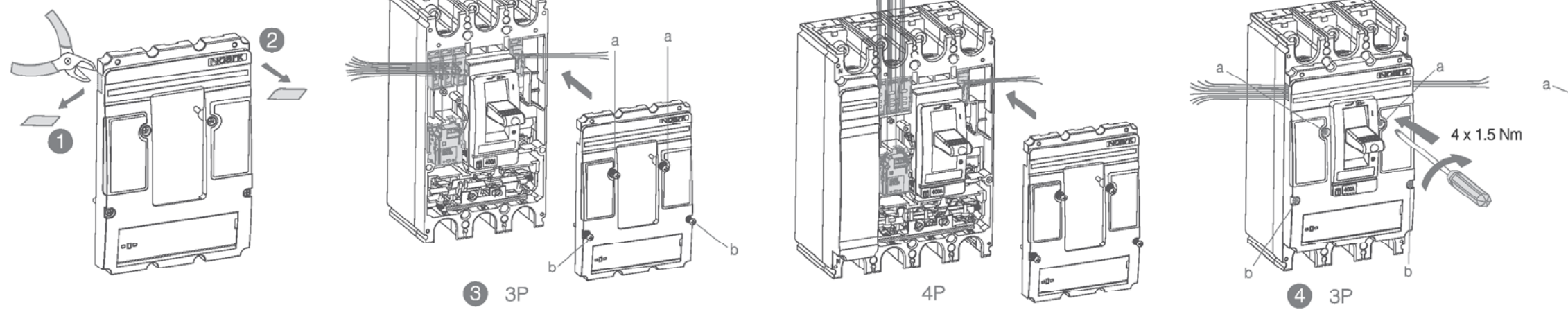
C 内部附件走线 Internal Accessories Wiring



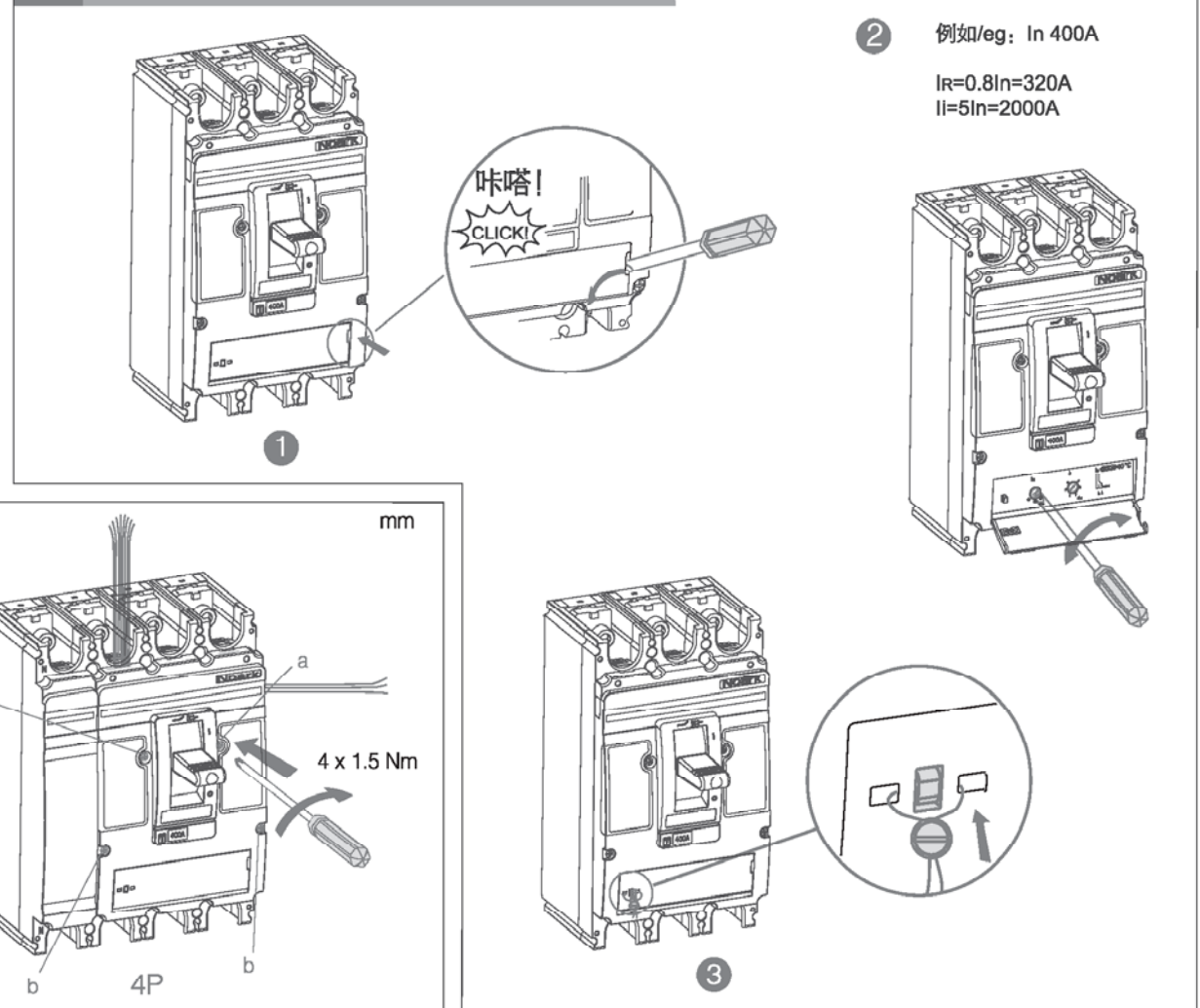
方式1: Mode 1:



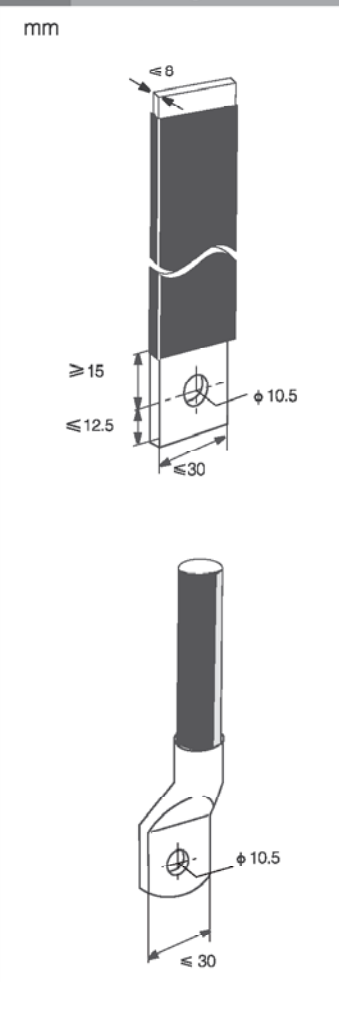
方式2: Mode 2:



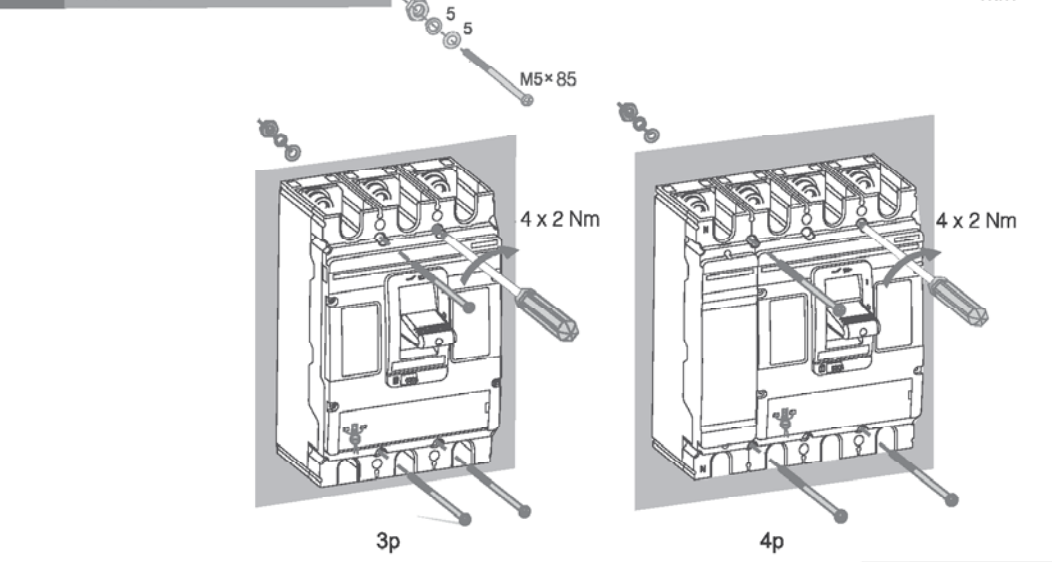
D 参数设置、铅封 Parameters Setting & Sealing



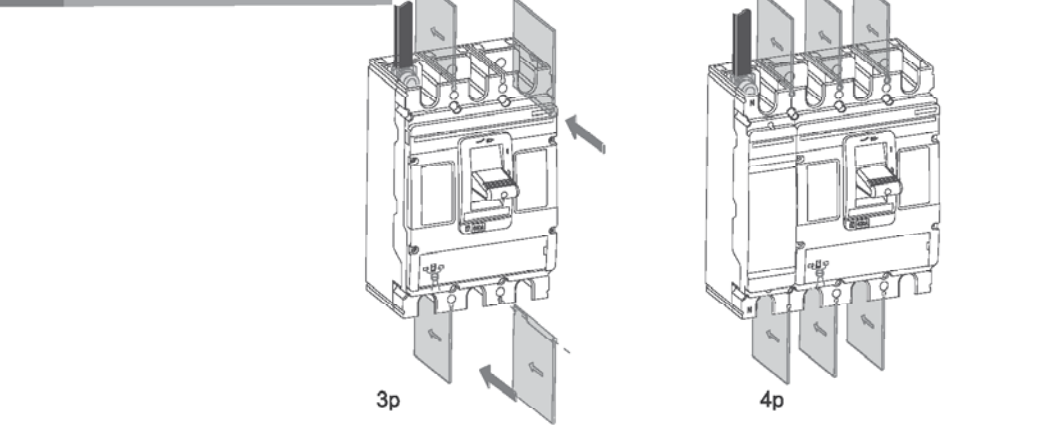
E 导线 Lug Bus-bar



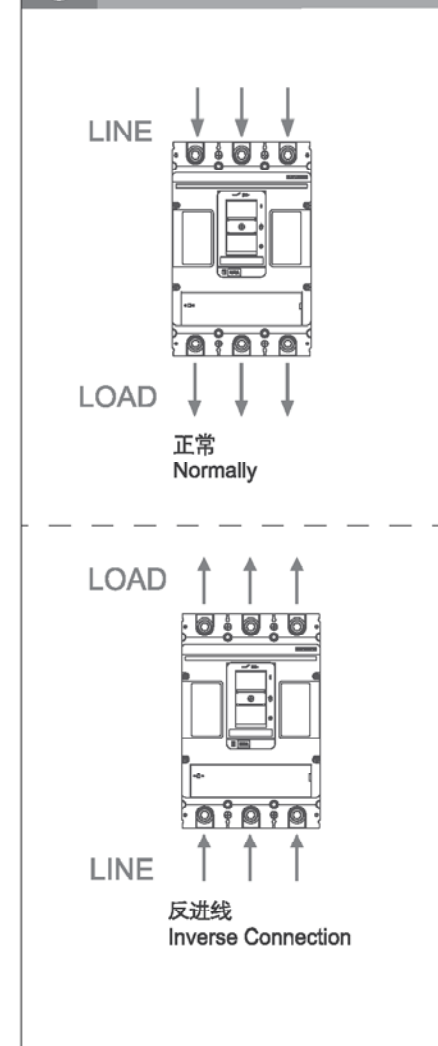
F 安装断路器 Installation



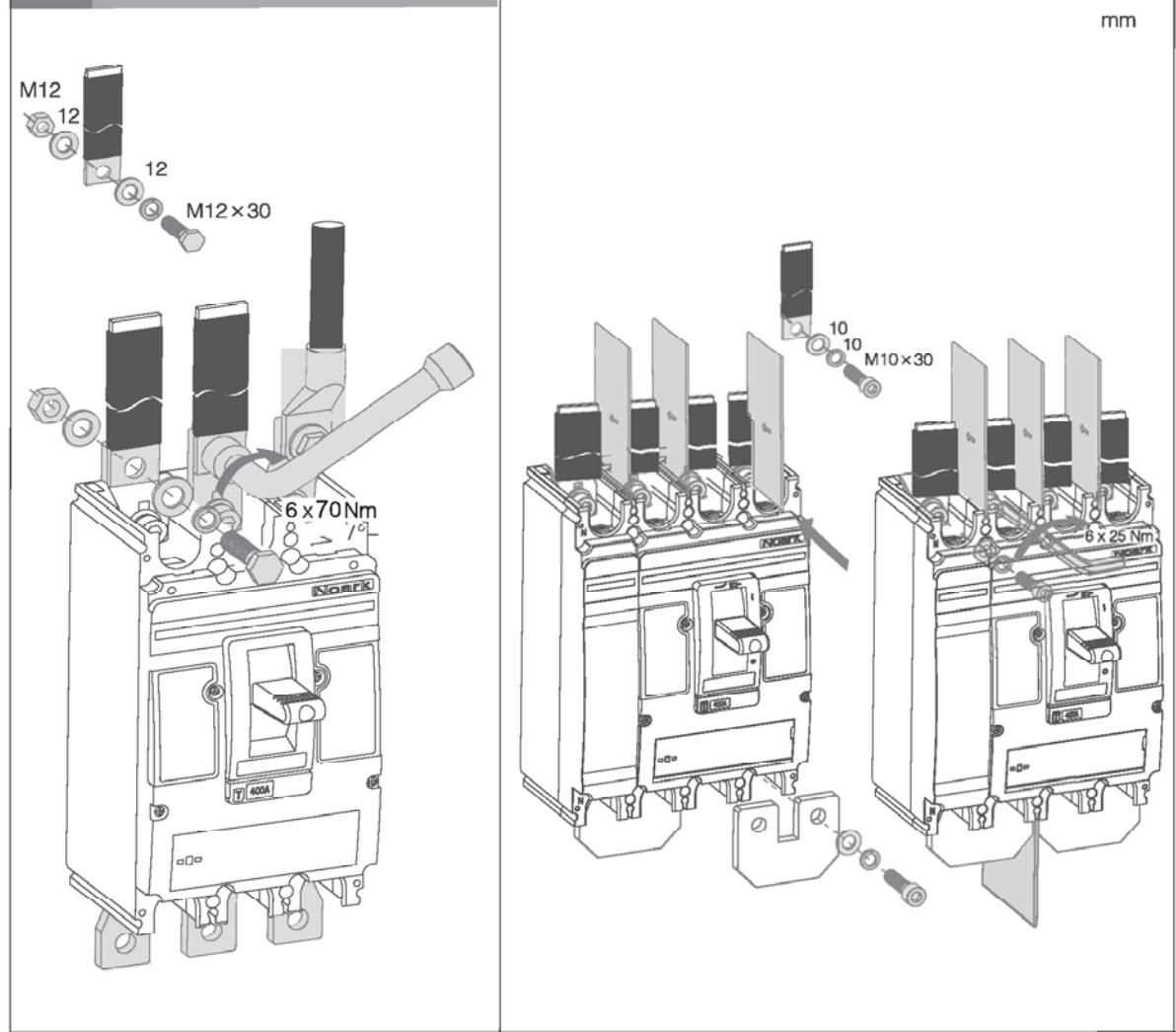
I 安装隔板 Phase Barrier



G 进线方式 Connecting Type



H 导线连接 Wiring Connecting



J 降容曲线及参数 Derating

温度降容参数表

产品型号	环境温度	-25℃	-15℃	-5℃	0℃	10℃	20℃	30℃	40℃	50℃	60℃	70℃
Ex9M3	250A	332.5	319.5	306.5	300	287.5	275	262.5	250	237.5	225	212.5
	315A	418	402	386	378	362	346.5	331	315	299	283.5	268
Ex9M3	350A	465	447	429	420	402.5	385	367.5	350	332.5	315	297.5
	400A	530	510	490	480	460	440	420	400	380	360	340

海拔降容参数表

海拔高度 m	2000 m	3000 m	4000 m	5000 m
额定工作电流In	1xIn	0.96xIn	0.93xIn	0.9xIn
额定工作电压Ue (V)	690	550	480	420
额定绝缘电压Ui (V)	800	750	660	550
介电性能 (V)	3000	2500	2100	1800
额定绝缘冲击电压Uimp	8	7.5	6.2	5.2

海拔降容曲线

最大工作电压 (V)

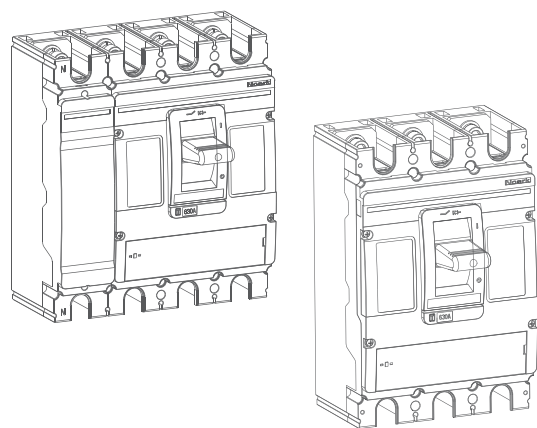
海拔 (m)

上海诺雅克电气有限公司
NOARK Electrics (Shanghai) Co., Ltd.
地址: 上海市松江工业区松开V-7A-1号地块
Add: Block V-7A-1, Songjiang Industrial Zone, Shanghai
电话/Tel: 021-3779 1111
客服热线/ Customer Service Hotline: 400-1092-111

采用环保纸印刷
Printed with environmentally-friendly paper
本说明书解释权归NOARK所有。
The expression right of the instructions are owned by NOARK.

Ex9M4/Ex9M4 SD

Ex9M4塑料外壳式断路器
Ex9M4 Moulded Case Circuit Breaker
Ex9M4 SD 隔离开关 (交流)
Switch Disconnecter

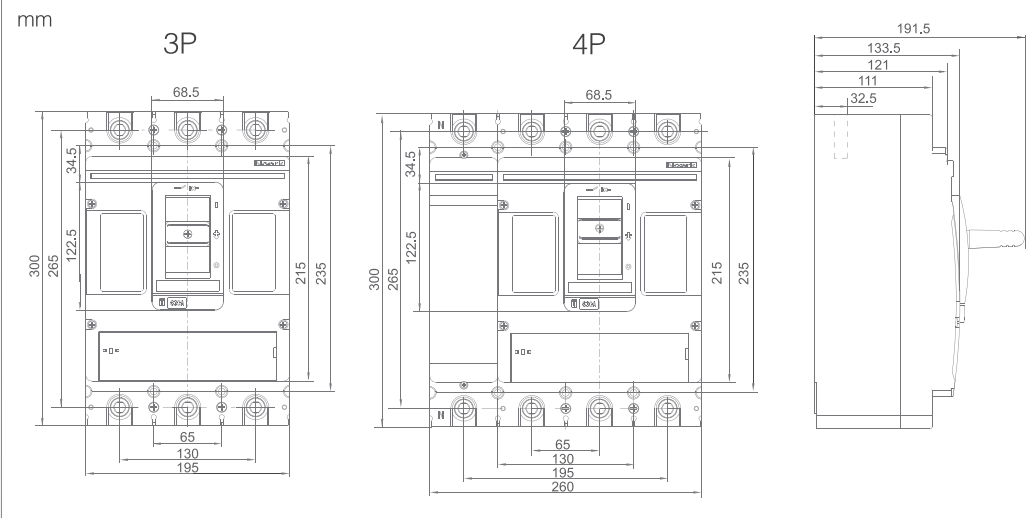


未按本说明书要求操作造成的不良后果, 制造商将不承担责任。

The manufacturer assumes no responsibility for unfavourable consequence resulting from the non-application or incorrect application of the instructions provided herein.

NOARK 诺雅克

外形尺寸 Outline Dimension



铭牌 Nameplate

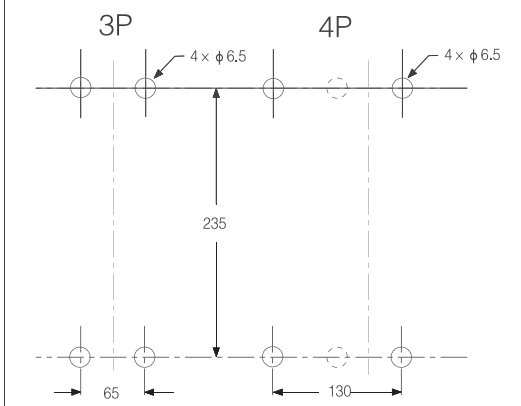


在此包装盒中除产品本体上所粘贴的铭牌外, 还增加了手操、电操粘贴用的综合铭牌。客户若需使用手操或电操, 其粘贴方法详见相关说明书。

630A

Except the existing nameplate on the product, we also prepare comprehensive nameplates for your manual use. Customers can use it in according to the instruction as needed.

安装尺寸 Installation Dimension



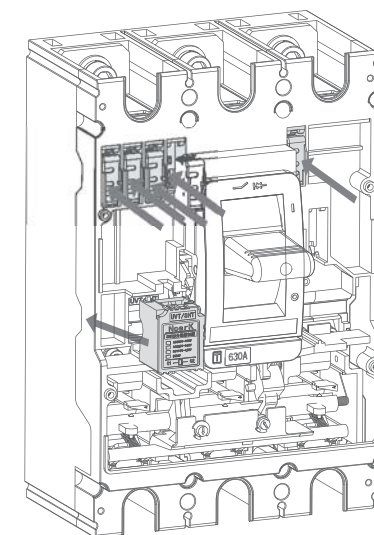
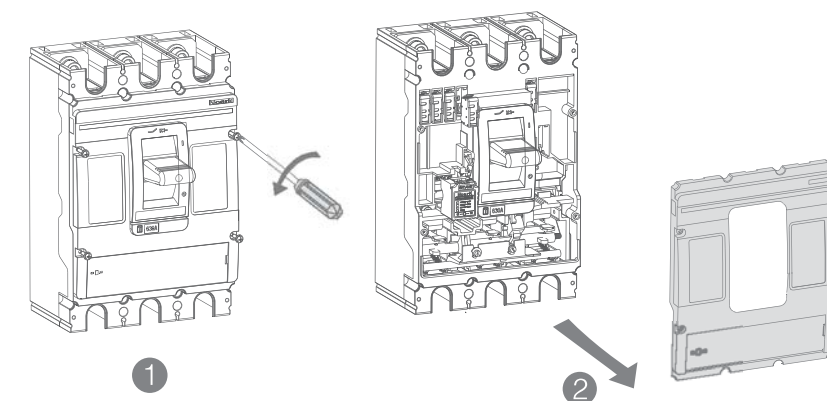
标配附件及必要工具 Standard Accessories & Necessary Tools

标配附件 Standard Accessories

名称 Appellation	规格 Model	数量 Number		示意图 Figure			
		3P	4P	安装螺钉 Installation Bolt	弹垫 S-Washer	平垫 F-Washer	螺母 Nut
安装螺钉 Installation Bolt	M5 x 95	4	4				
弹垫 Spring Washer	5	4	4				
平垫 Flat Washer	5	4	4				
螺母 Nut	M5	4	4				
隔弧板 Phase Barrier		4	6				

必要工具 Necessary Tools

六角扳手 Hex key		螺丝刀 Screw-driver	
mm		mm	
	10		≤ φ4
			φ4.5-5



注意:

(1) 若装入的是欠压脱扣器时, 应使脱扣器先通电, 断路器才能再扣及合闸。

(2) 欠压脱扣器与分励脱扣器不能同时安装。

(3) 装分励或欠压脱扣器时, 要往前推动推杆 (如下放大图), 以免破坏推杆。

Notice:

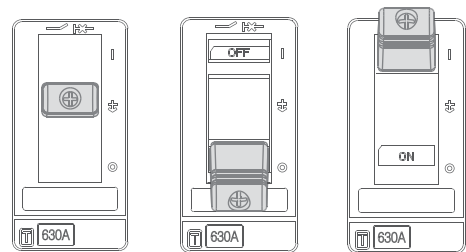
1. If under-voltage release is installed, make sure it is energized before relatch and close the circuit-breaker.

2. The under-voltage release and shunt release can not be installed at the same time.

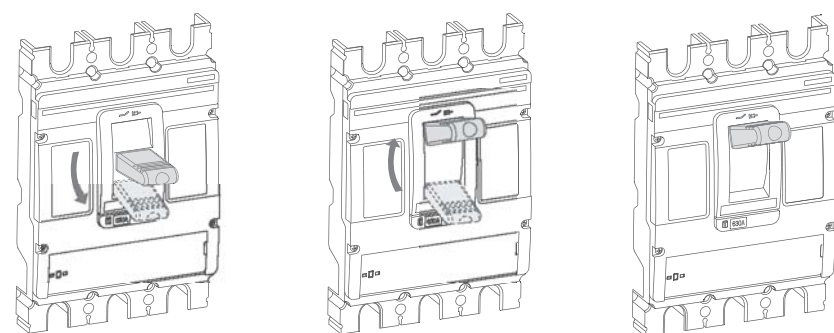
3. When shunt release or undervoltage release is installed, push forward the pushing bar to avoid damage it (just as the detailed view below).

A 操作测试 Operating Test

测试前准备:
Before testing:

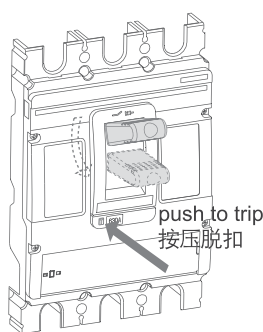


TRIP 脱扣
OFF 分闸
ON 合闸



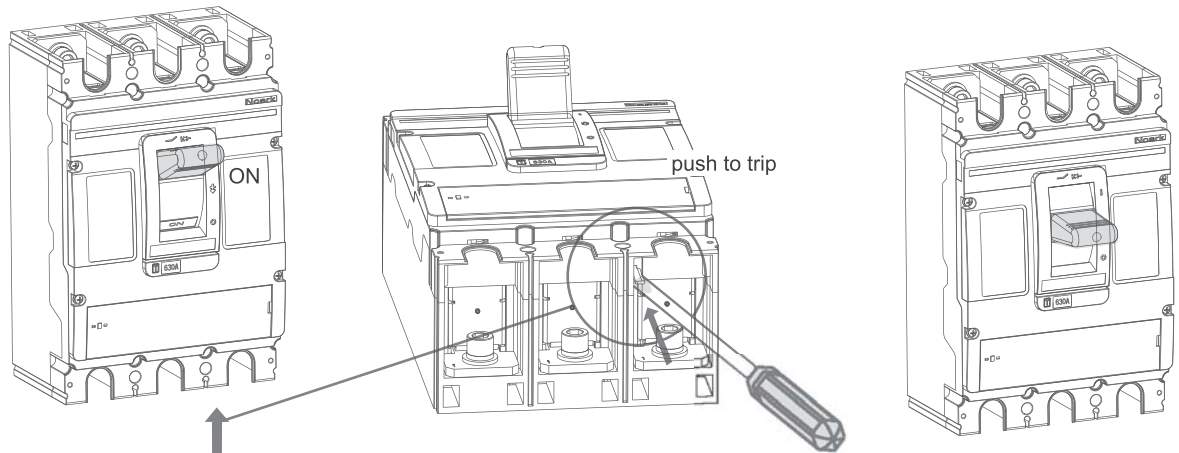
1 TRIP 脱扣 → OFF 分闸
2 OFF 分闸 → ON 合闸
3 ON 合闸

测试1:
Test 1:



4

测试2:
Test 2:



4

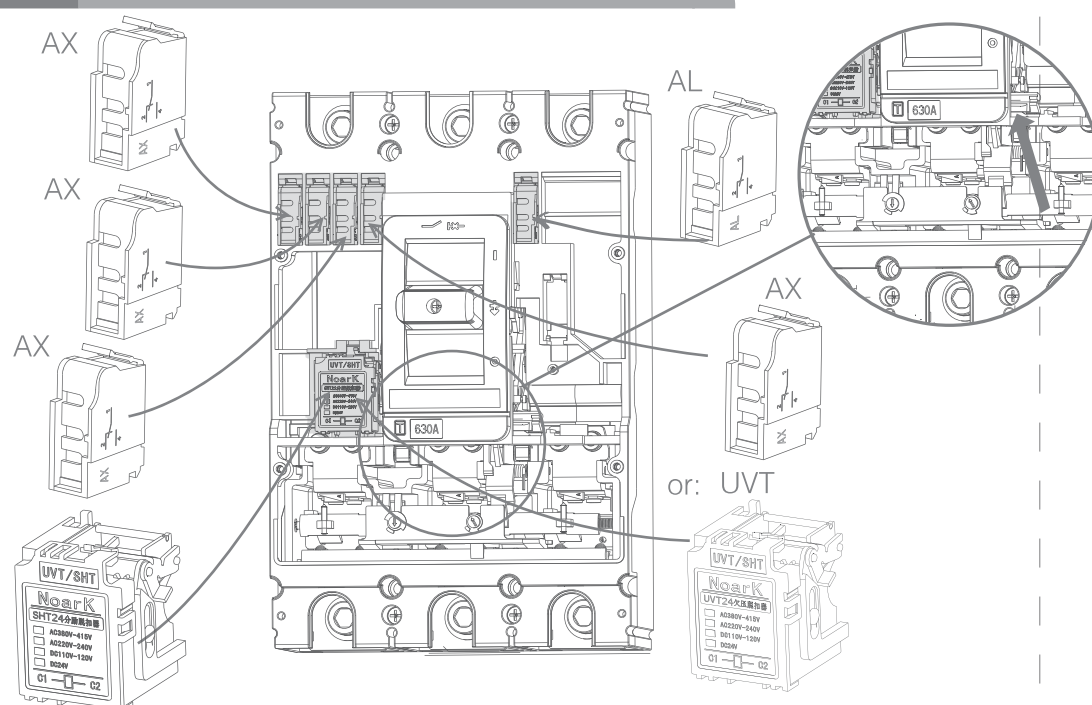
咔嗒!
CLICK!

5 TRIPPED / 脱扣

咔嗒!
CLICK!

5 TRIPPED / 脱扣

B 内部附件及安装 Internal Accessories & Installation



AX	辅助触头 Auxiliary Contact
AL	报警触头 Alarm Contact
SHT	分励脱扣器 Shunt Release
UVT	欠电压脱扣器 Under-voltage Release

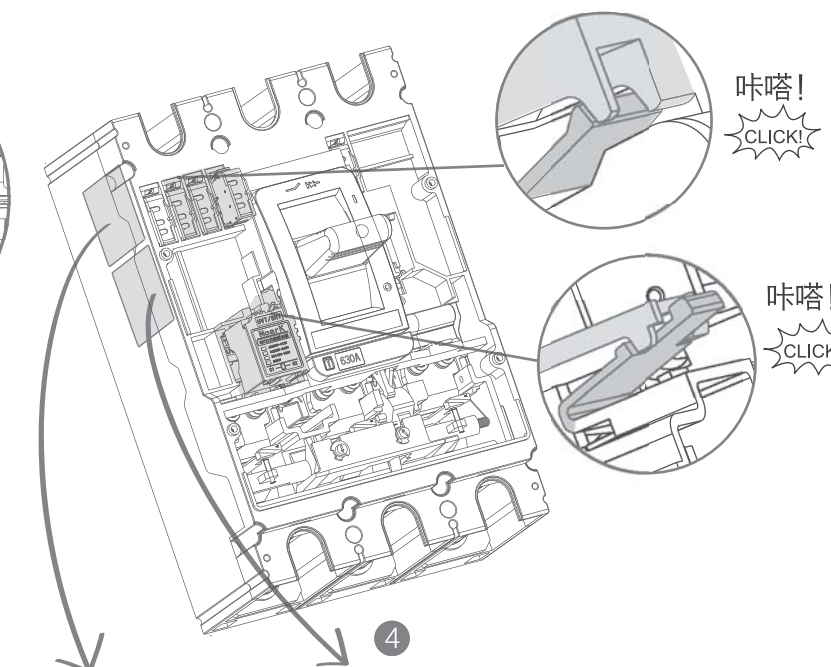
SHT	分励脱扣器 Shunt Release
AX	辅助触头 Auxiliary Contact
AL	报警触头 Alarm Contact
SHT	分励脱扣器 Shunt Release
UVT	欠电压脱扣器 Under-voltage Release

合闸 ON	分闸 OFF	分、合闸 OFF & ON	自由脱扣 TRIP
AX12 — AX11	AX12 — AX11	AL92 — AL91	AL92 — AL91
AX14 — AX11	AX14 — AX11	AL94 —	AL94 —

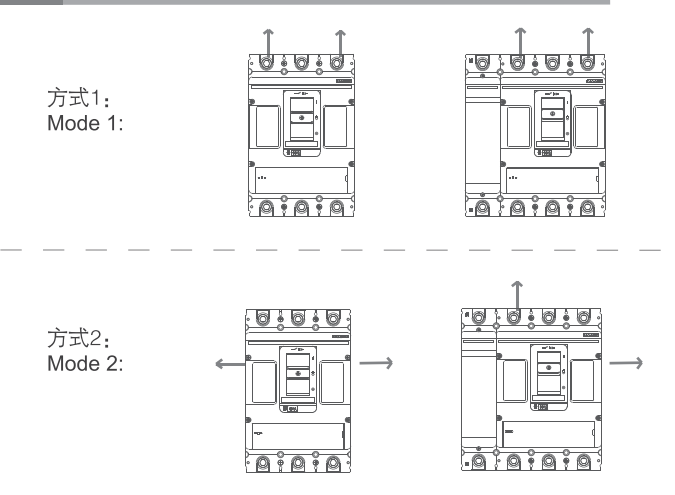
辅助(报警)触头接线图			
AX1	11	12	14
AX2	21	22	24
AX3	31	32	34
AX4	41	42	44
AL	91	92	94
SDE	81	82	84

分励脱扣器接线图			
AC 380V-415V	AC 220V-240V	AC 110V	AC 48V
DC 220V	DC 110V-120V	DC 48V	DC 24V

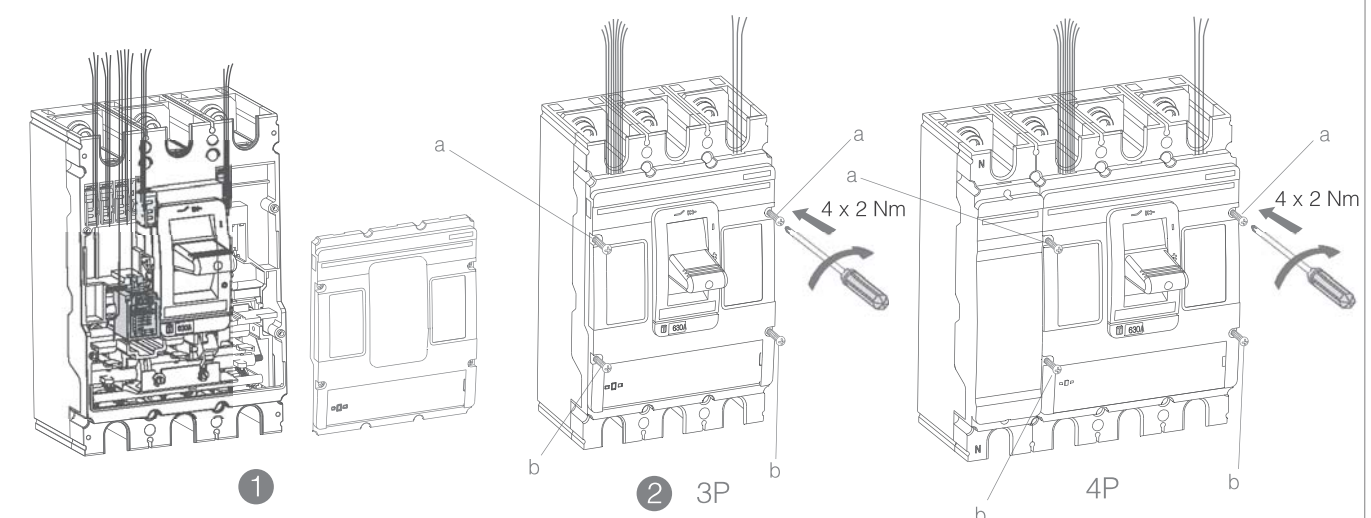
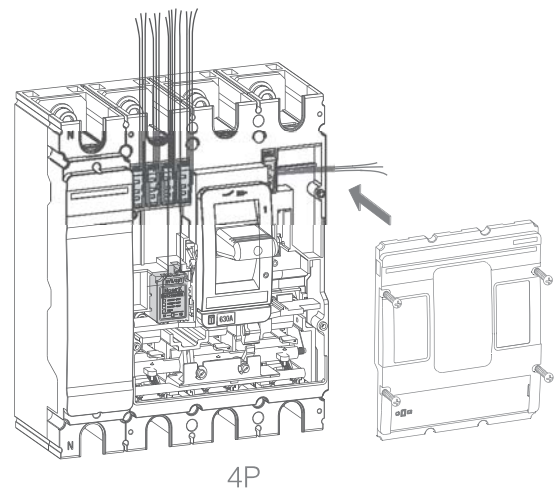
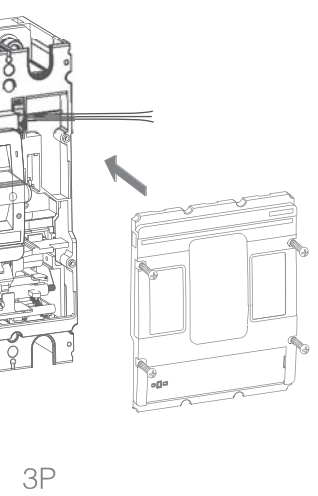
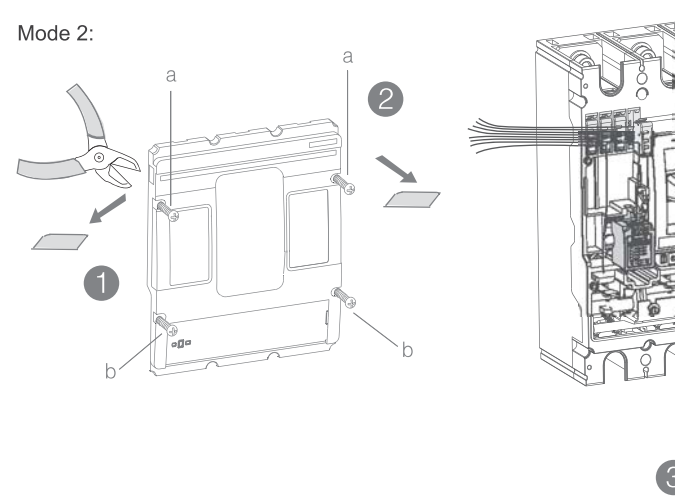
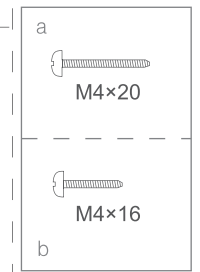
欠压脱扣器接线图			
AC 380V-415V	AC 220V-240V	AC 110V	AC 48V
DC 220V	DC 110V-120V	DC 48V	DC 24V



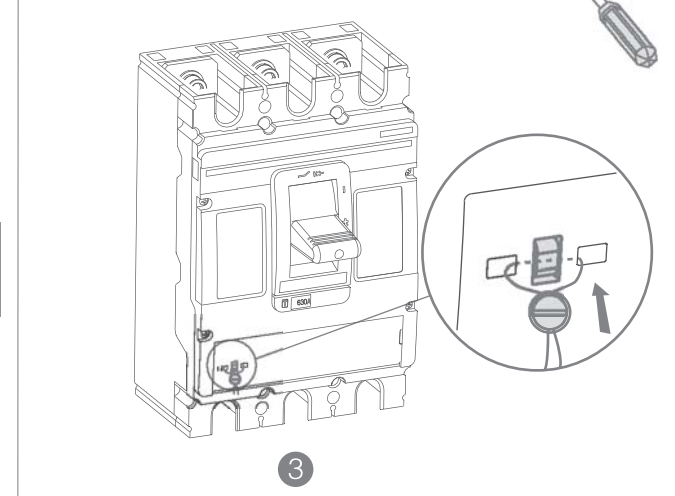
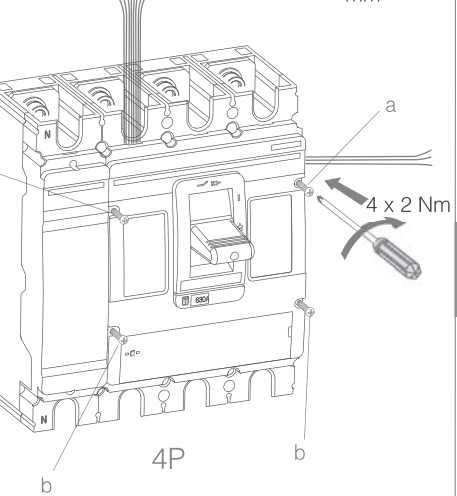
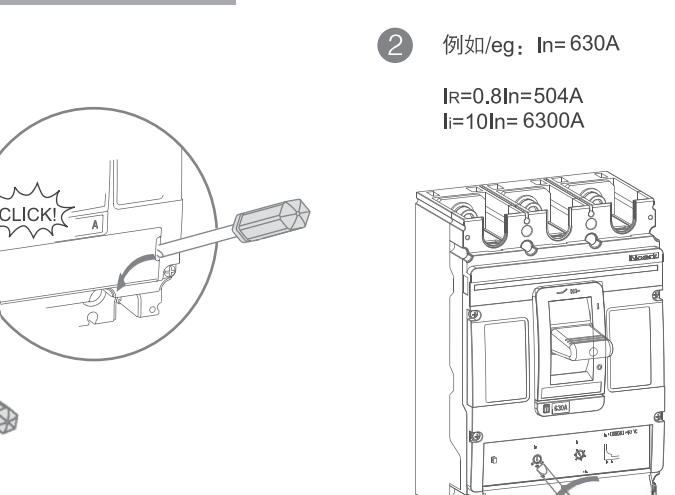
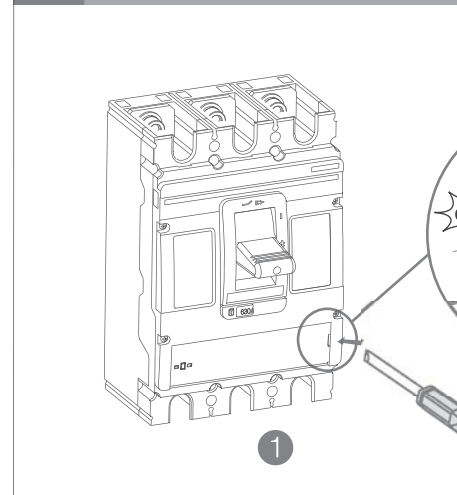
C 内部附件导线 Internal Accessories Wiring



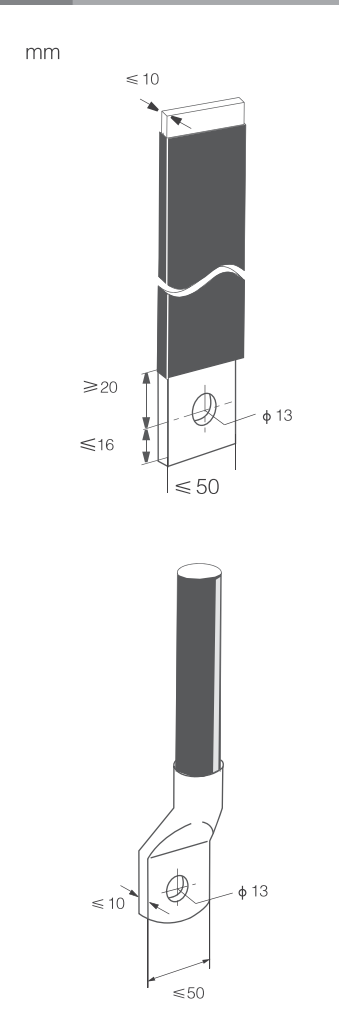
方式1: Mode 1:



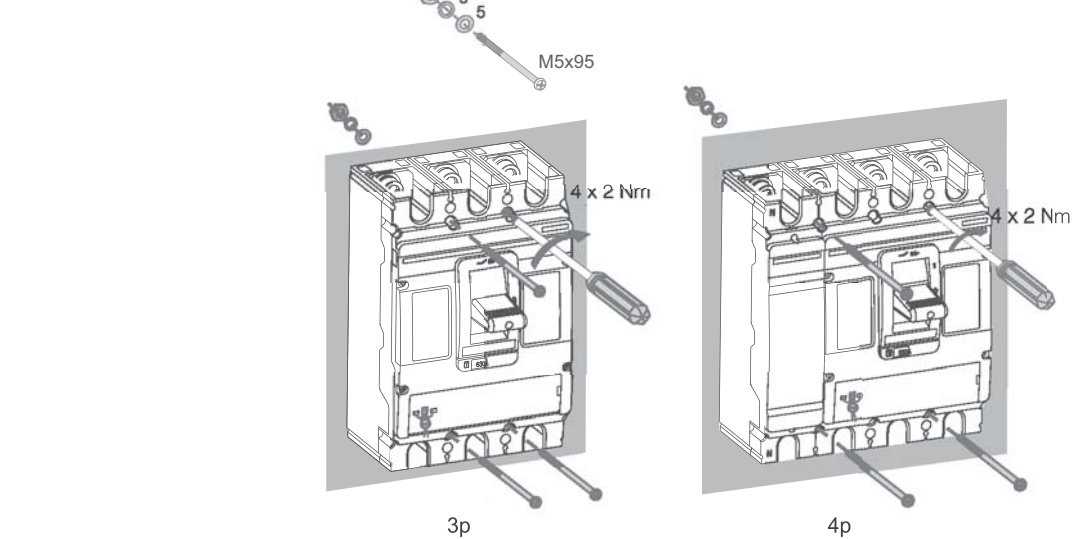
D 参数设置、铅封 Parameters Setting & Sealing



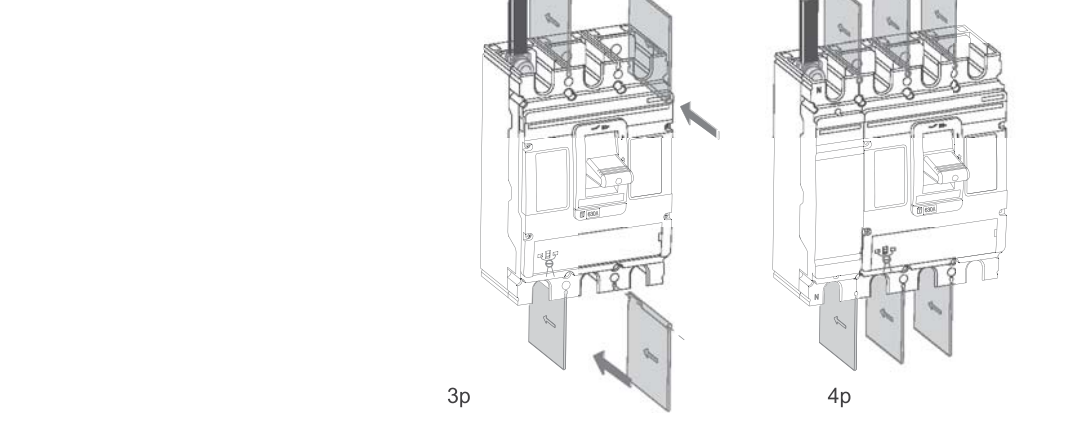
E 导线 Lug Bus-bar



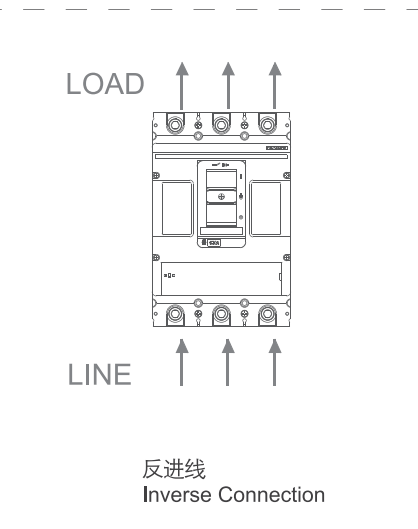
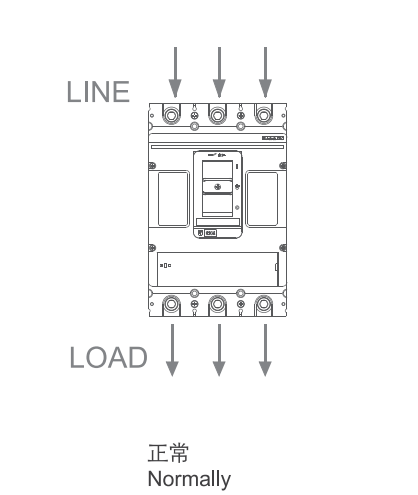
F 安装断路器 Installation



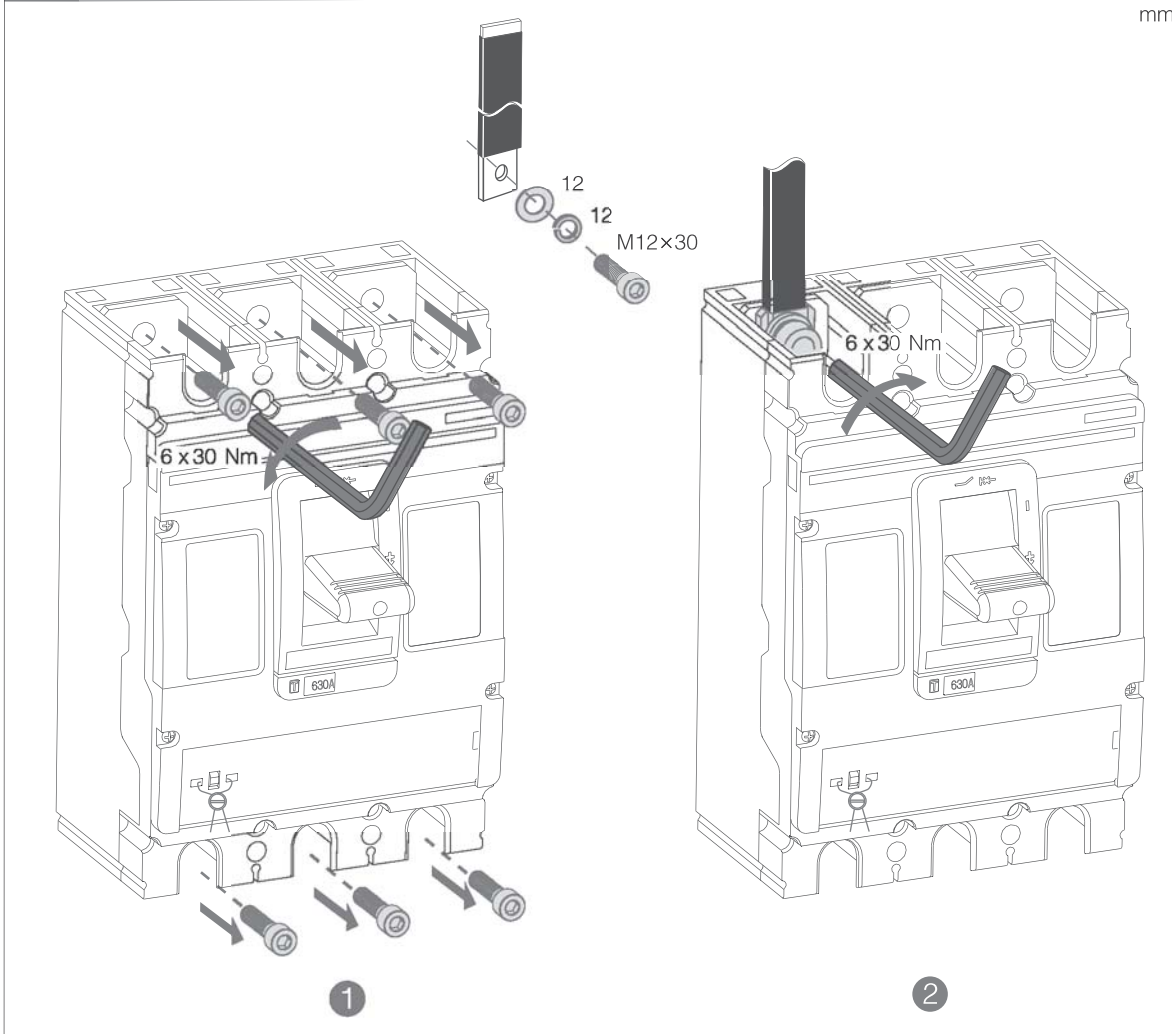
I 安装隔板 Phase Barrier



G 进线方式 Connecting Type



H 导线连接 Wiring Connecting



J 降容曲线及参数

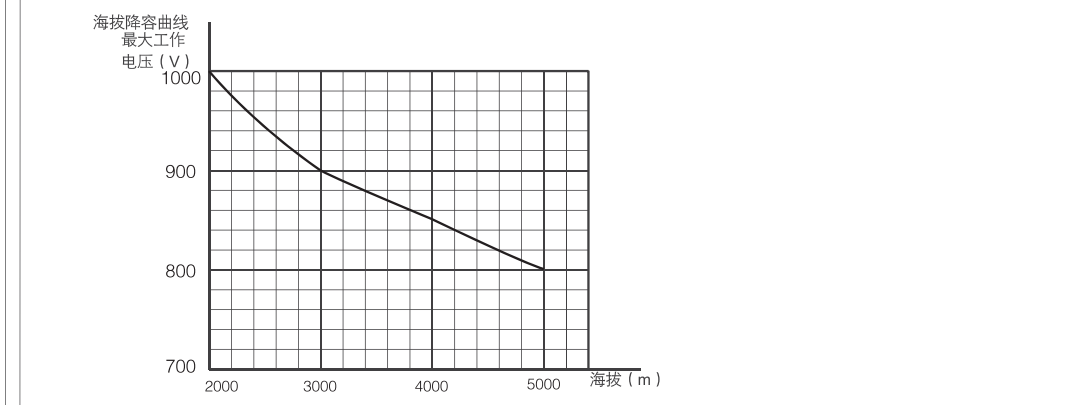
温度降容参数表

产品型号	额定电流	环境温度										
		-25°C	-15°C	-5°C	0°C	10°C	20°C	30°C	40°C	50°C	60°C	70°C
Ex9M4	400A	530	510	490	480	460	440	420	400	380	360	340
	500A	662.5	637.5	612.5	600	575	550	525	500	475	450	425
	630A	836	804	772	756	724.5	693	661.5	630	598.5	567	535.5

海拔降容参数表

海拔高度2000m以下对断路器性能无显著影响。超过这个高度，必须考虑到介电强度的下降和空气变冷因素。下列表格给出了海拔高度2000m以上的修正值，分断能力保持不变。

海拔高度 m	2000m	3000m	4000m	5000m
额定工作电流 I_n	$1 \times I_n$	$0.96 \times I_n$	$0.93 \times I_n$	$0.9 \times I_n$
额定工作电压 U_e (V)	690	650	480	420
额定绝缘电压 U_i (V)	AC 800	750	660	550
介电性能 (V)	AC 3000	2500	2100	1800
额定绝缘冲击电压 U_{imp}	8	8	8	8

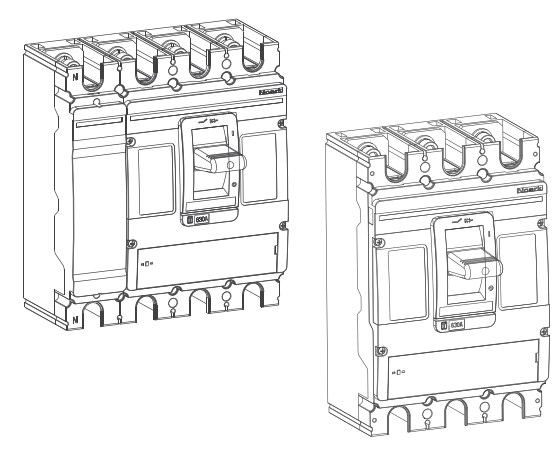


上海诺雅克电气有限公司
NOARK Electric (Shanghai) Co., Ltd.
地址: 上海市松江工业区松开V-7A-1号地块
Add: Block V-7A-1, Songjiang Industrial Zone, Shanghai
电话/Tel: 021-3779 1111
客服热线/ Customer Service Hotline: 400-1092-111

采用环保纸印刷
Printed with environmentally-friendly paper
本说明书解释权归NOARK所有。
The expression right of the instructions are owned by NOARK.
Z9M4201212CN

Ex9M5 / Ex9M5 SD

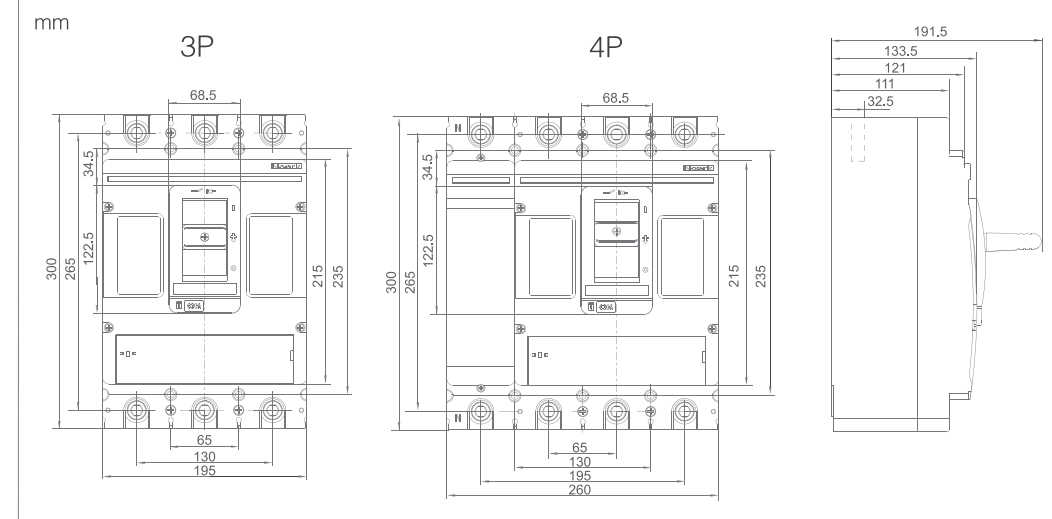
Ex9M5塑料外壳式断路器
Ex9M5 Moulded Case Circuit Breaker
Ex9M5 SD 隔离开关 (交流)
Switch Disconnecter



未按本说明书要求操作造成的不良后果，制造商将不承担责任。
The manufacturer assumes no responsibility for unfavourable consequence resulting from the non-application or incorrect application of the instructions provided herein.



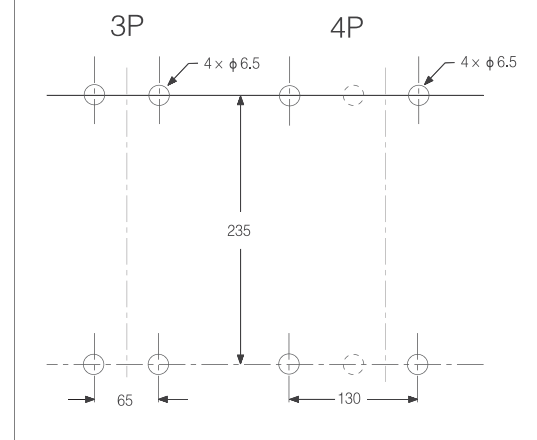
外形尺寸 Outline Dimension



铭牌 Nameplate

在此包装盒中除产品本体上所粘贴的铭牌外，还附加了手操、电操粘贴用的综合铭牌。客户若需使用手操或电操，其粘贴方法详见相关说明书。
Except the existing nameplate on the product, we also prepare comprehensive nameplates for your manual use. Customers can use it in according to the instruction as needed.

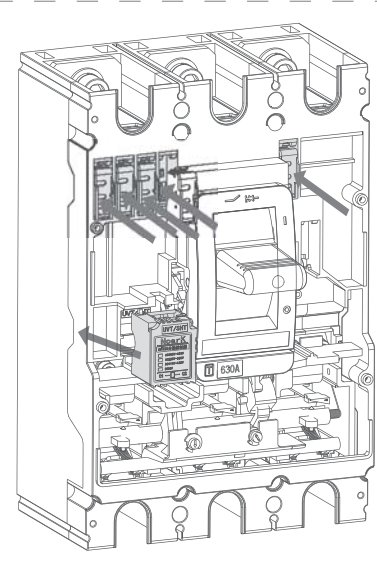
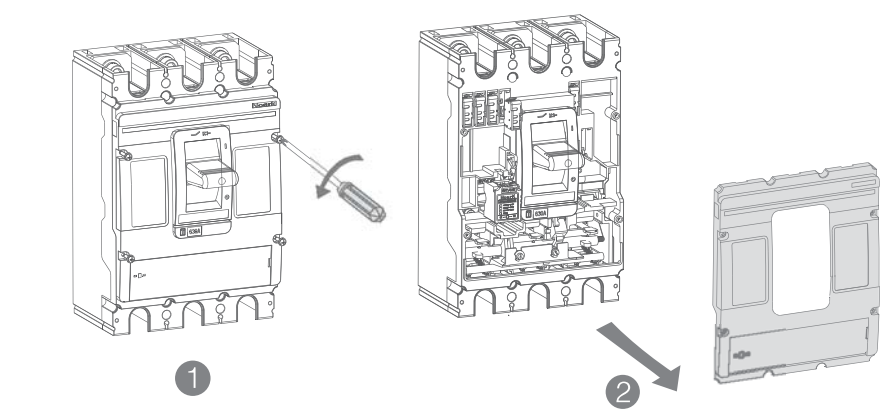
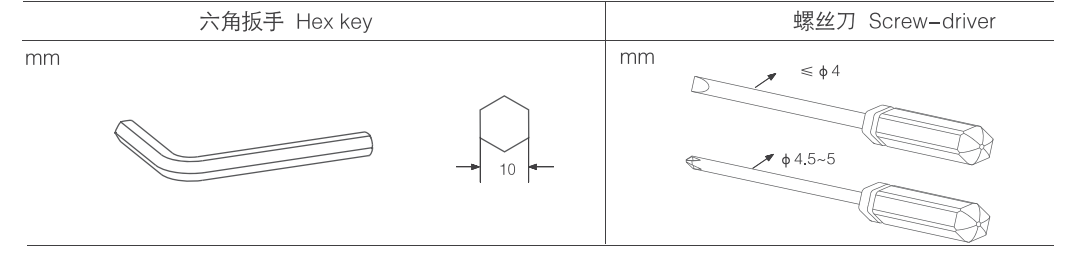
安装尺寸 Installation Dimension



标配附件及必要工具 Standard Accessories & Necessary Tools

名称 Appellation	规格 Model	数量 Number		示意图 Figure			
		3P	4P	安装螺钉 Installation Bolt	弹垫 S-Washer	平垫 F-Washer	螺母 Nut
安装螺钉 Installation Bolt	M5×95	4	4				
弹垫 Spring Washer	5	4	4				
平垫 Flat Washer	5	4	4				
螺母 Nut	M5	4	4				
隔离板 Phase Barrier		4	6				

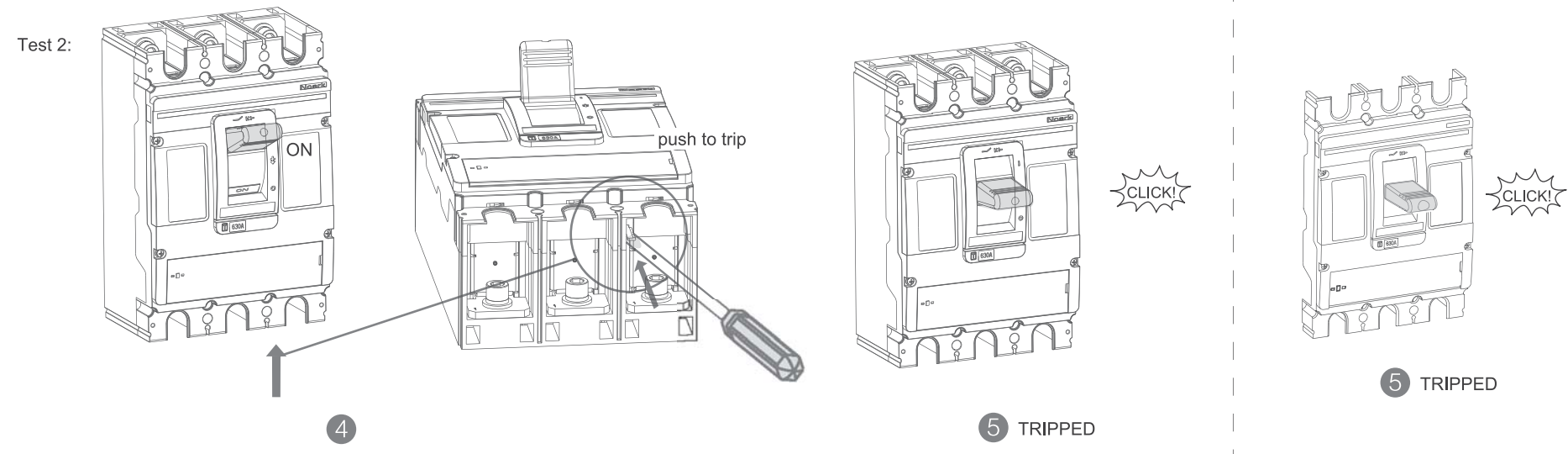
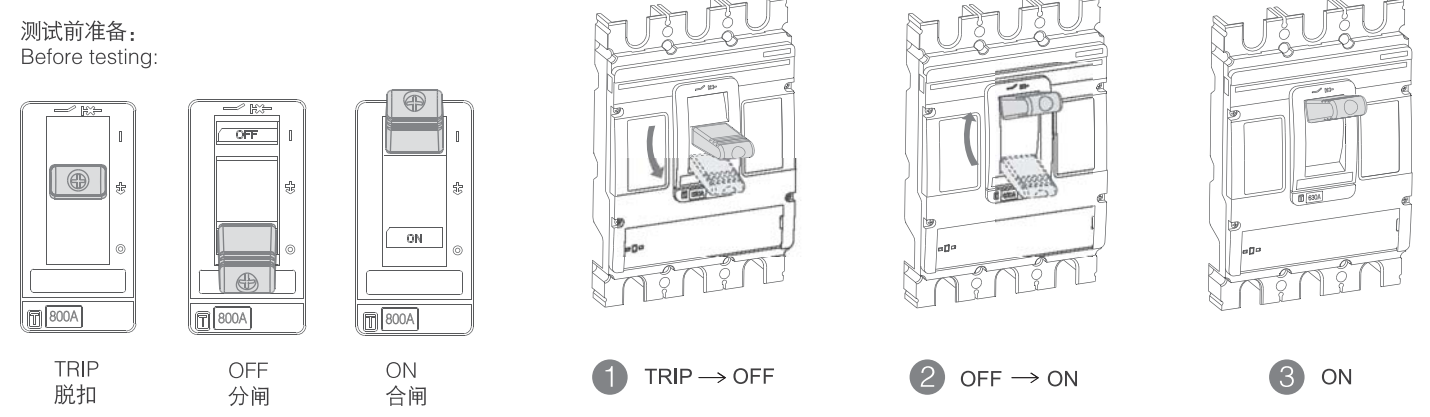
必要工具 Necessary Tools



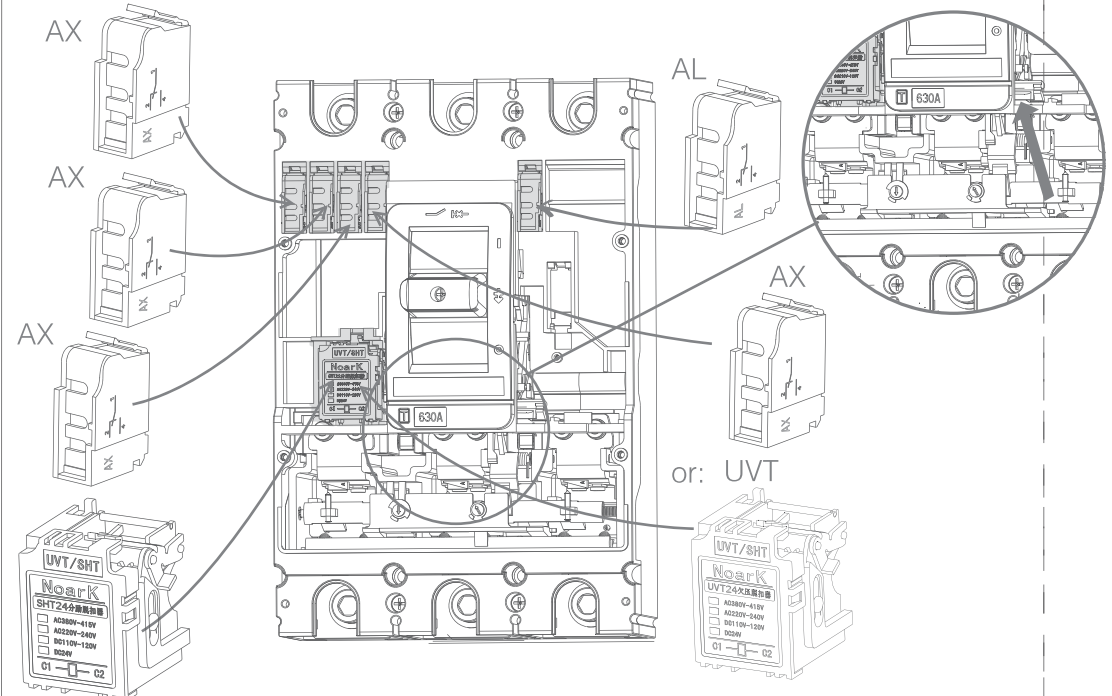
注意:
1. 若装入的是欠压脱扣器时, 应使脱扣器先通电, 断路器才能再扣及合闸。
2. 欠压脱扣器与分励脱扣器不能同时安装。
3. 装分励或欠压脱扣器时, 要往前推动推杆 (如下放大图), 以免破坏推杆。

Notice:
1. If under-voltage release is installed, make sure it is energized before relatch and close the circuit-breaker.
2. The under-voltage release and shunt release can not be installed at the same time.
3. When shunt release or under-voltage release is installed, push forward the pushing bar to avoid damage it (just as the detailed view below).

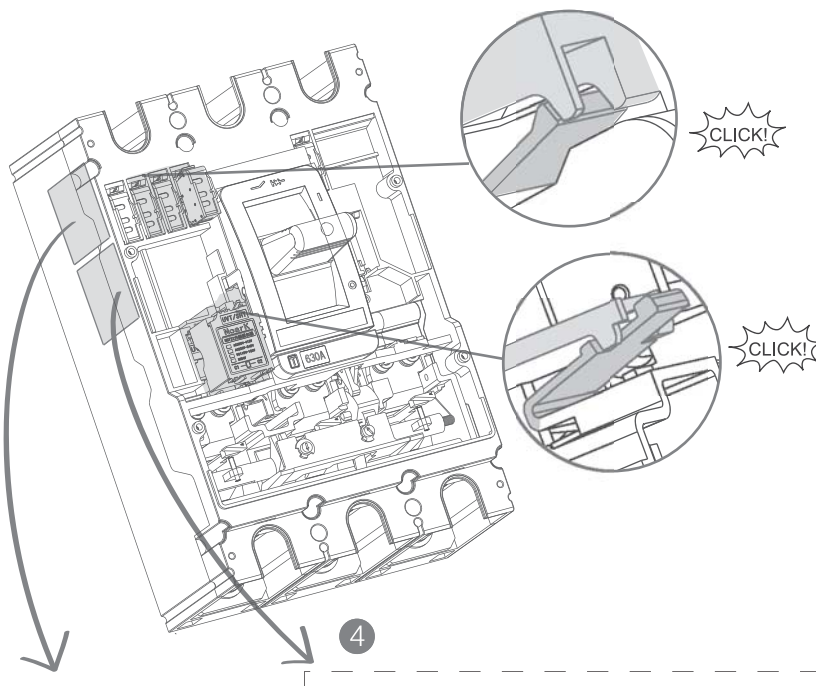
A 操作测试 Operating Test



B 内部附件及安装 Internal Accessories & Installation

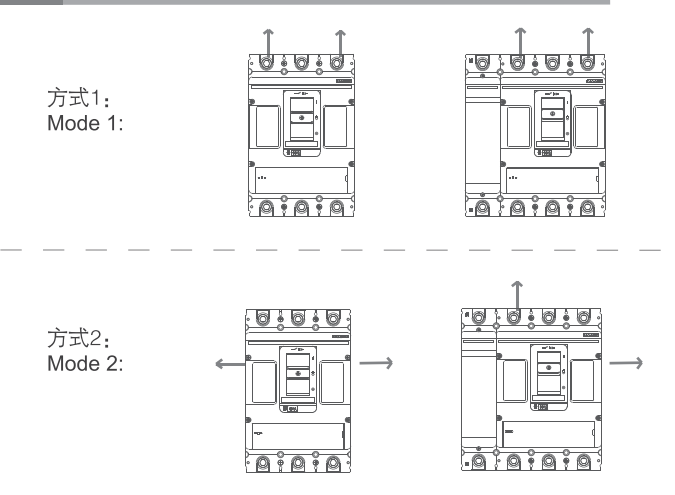


AX	辅助触头 Auxiliary Contact	合闸 ON	分闸 OFF	分、合闸 OFF & ON	自由脱扣 TRIP
AX12	AX12	AX12	AX14	AL92	AL92
AX14	AX14	AX14	AX11	AL94	AL94
AX11	AX11	AX11	AX11	AL91	AL91
AX11	AX11	AX11	AX11	AL91	AL91

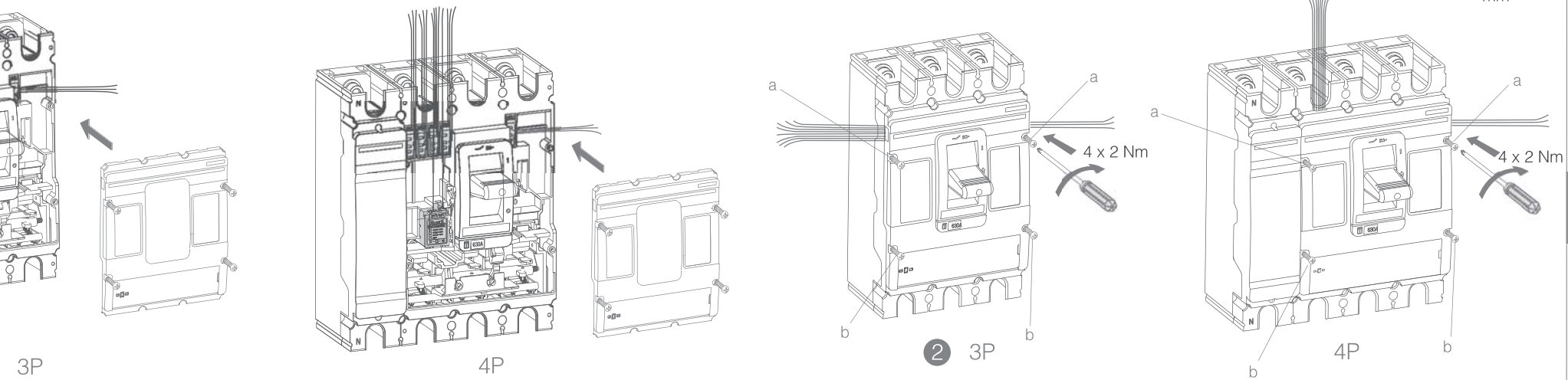
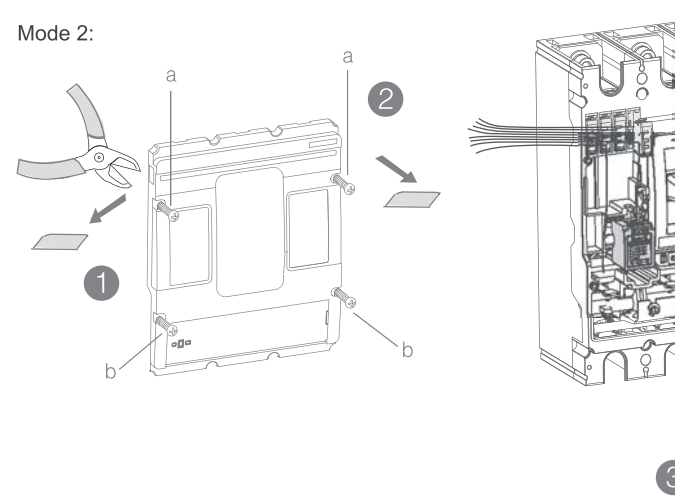
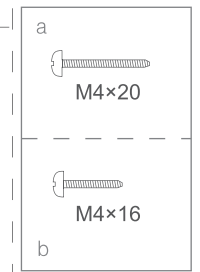


辅助(报警)触头接线图	分励脱扣器接线图	欠压脱扣器接线图
<ul style="list-style-type: none"> AX1 11 12 14 AX2 21 22 24 AX3 31 32 34 AX4 41 42 44 AL 91 92 94 SDE 81 82 84 	<ul style="list-style-type: none"> AC 380V-415V AC 220V-240V AC 110V AC 48V DC 220V DC 110V-120V DC 48V DC 24V 	<ul style="list-style-type: none"> AC 380V-415V AC 220V-240V AC 110V AC 48V DC 220V DC 110V-120V DC 48V DC 24V

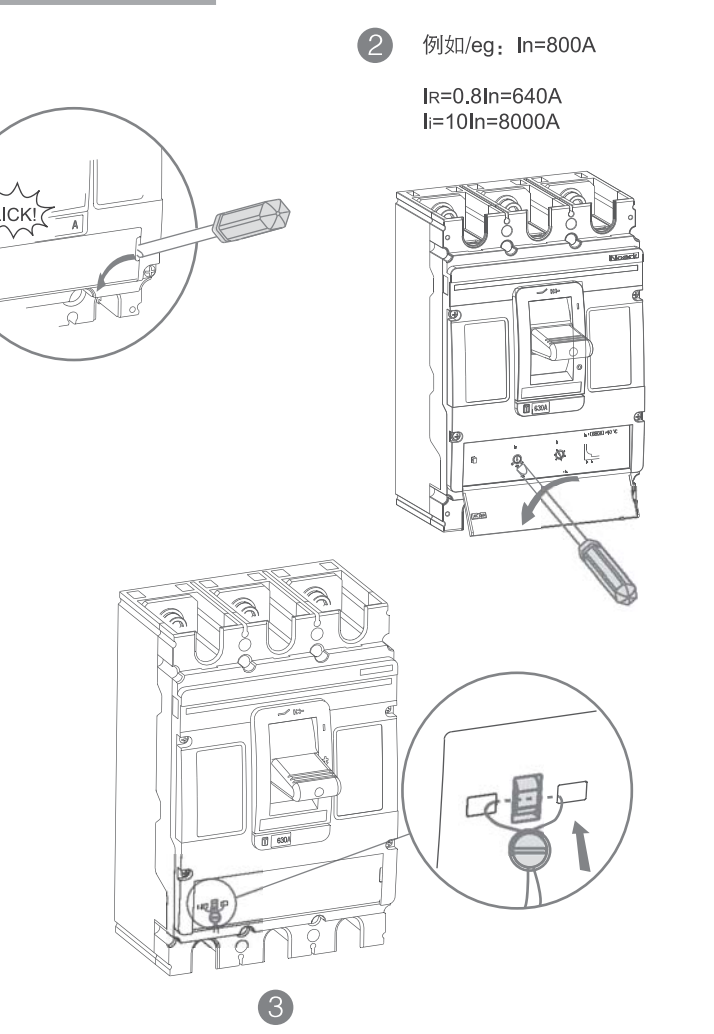
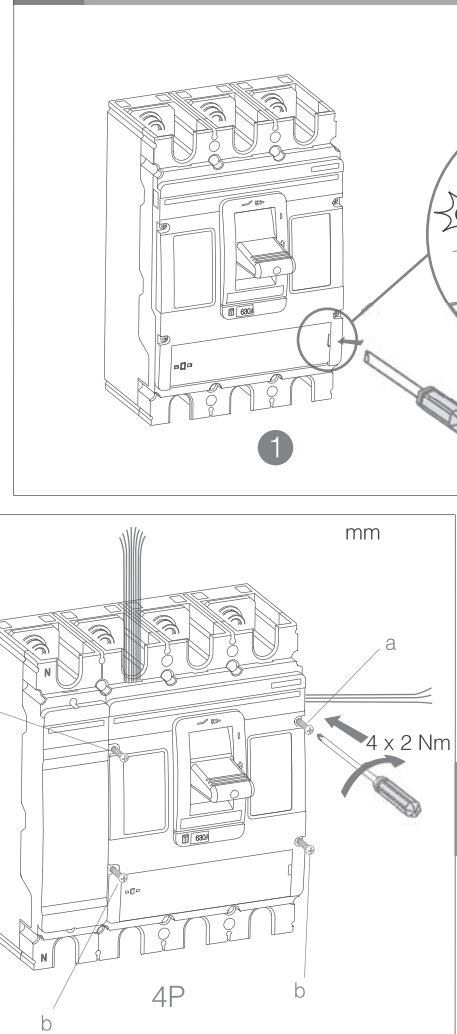
C 内部附件导线 Internal Accessories Wiring



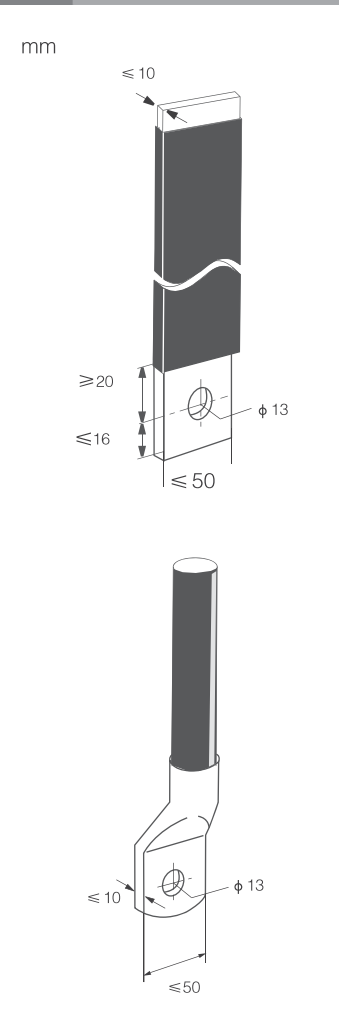
方式1: Mode 1:



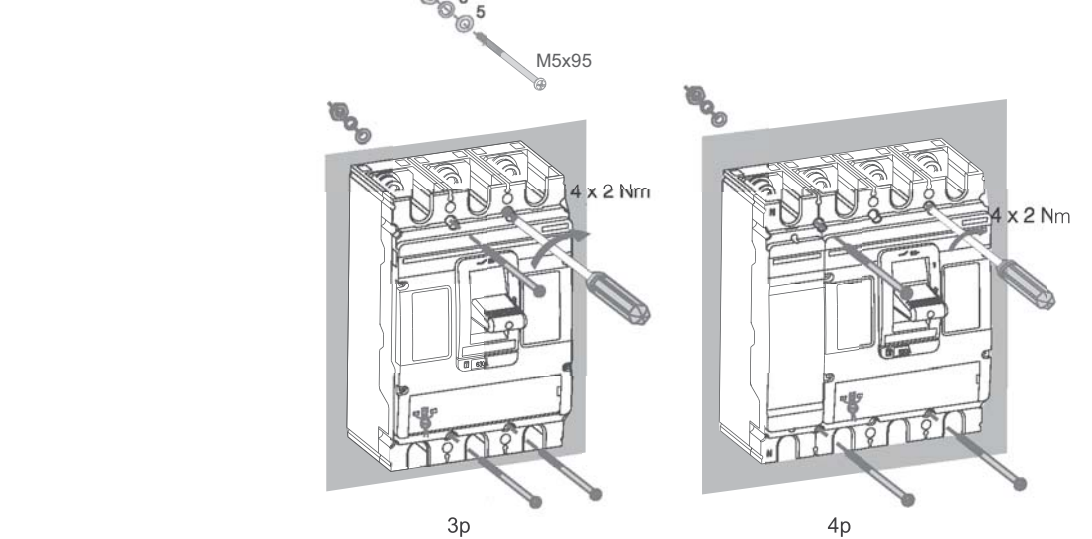
D 参数设置、铅封 Parameters Setting & Sealing



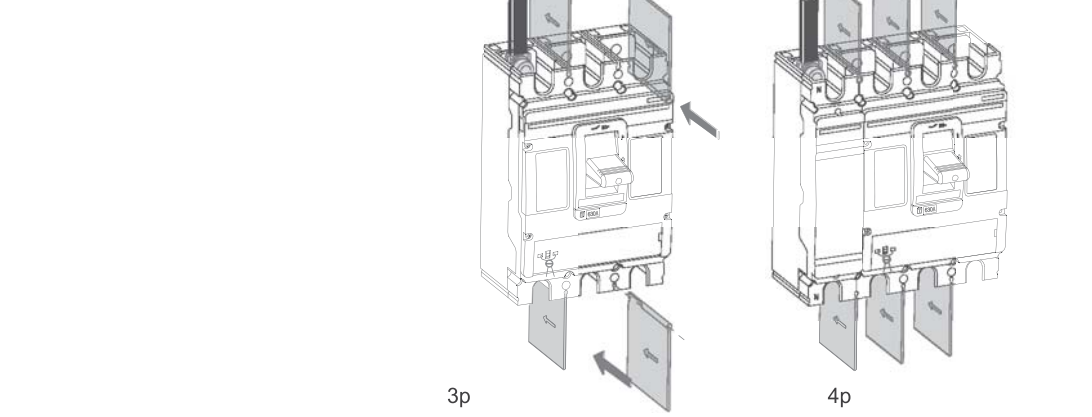
E 导线 Lug Bus-bar



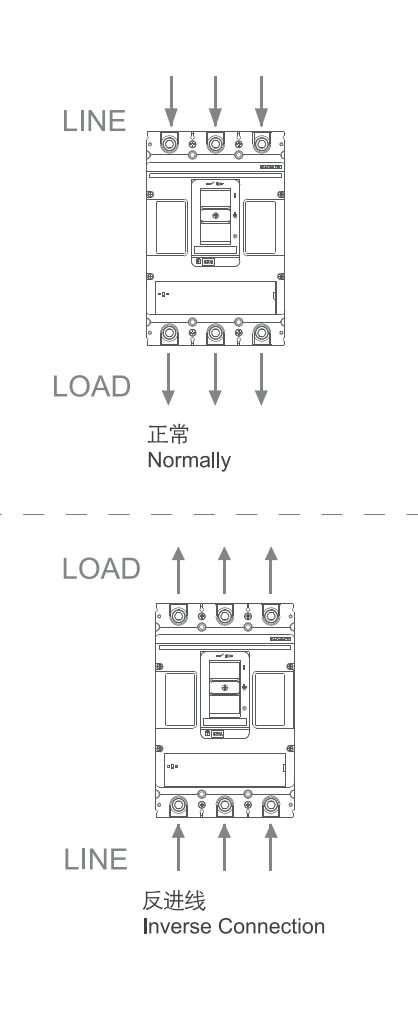
F 安装断路器 Installation



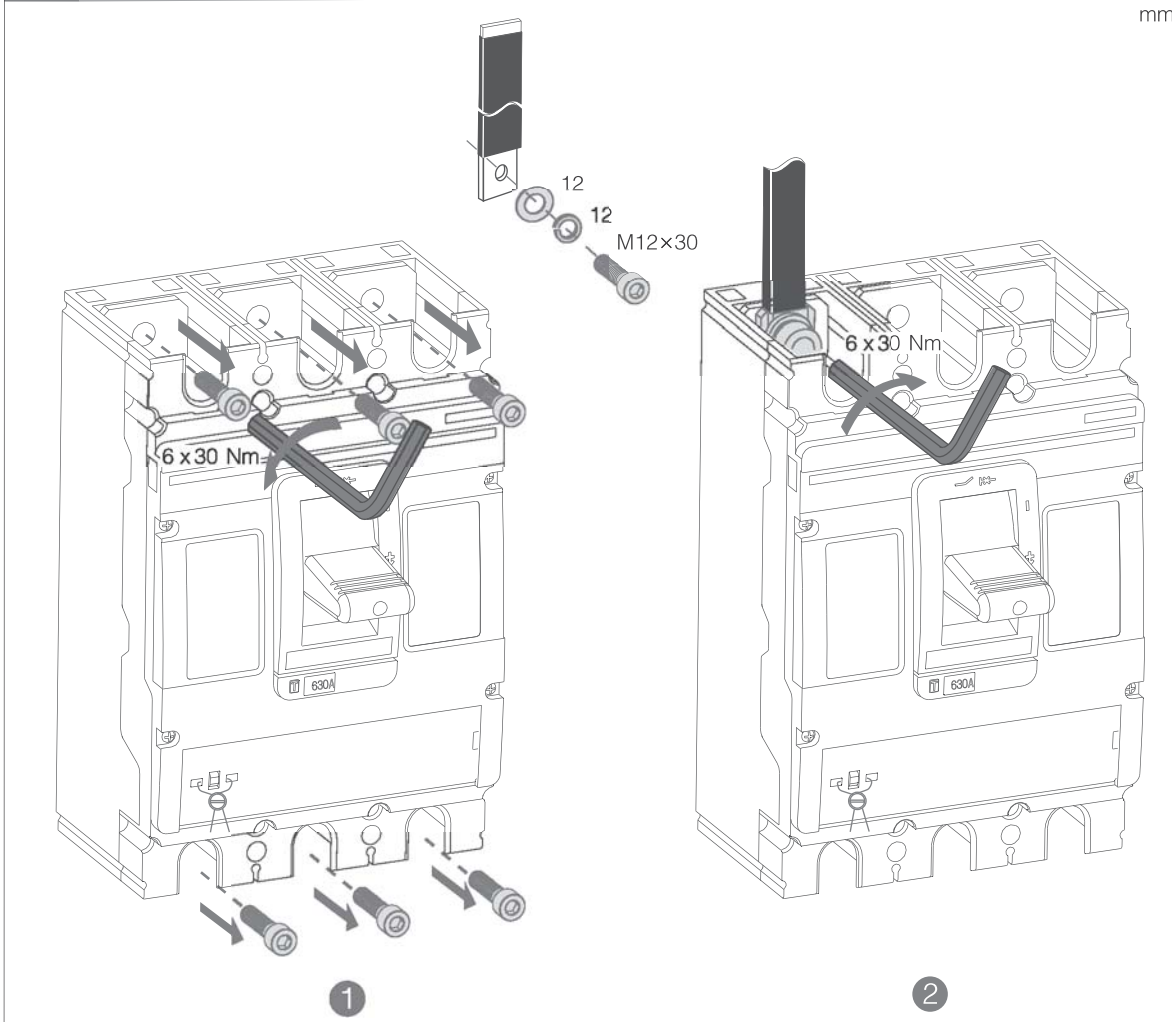
I 安装隔板 Phase Barrier



G 进线方式 Connecting Type



H 导线连接 Wiring Connecting



J 降容曲线及参数 Derating

温度降容参数表

产品型号	环境温度											
	额定电流	-25℃	-15℃	-5℃	0℃	10℃	20℃	30℃	40℃	50℃	60℃	70℃
Ex9M5	630A	836	804	772	756	724.5	693	661.5	630	598.5	567	535.5
	700A	927.5	892.5	857.5	840	805	770	735	700	665	630	595
	800A	1060	1020	980	960	920	880	840	800	760	720	680

海拔降容参数表

海拔高度2000m以下对断路器性能无显著影响。超过这个高度，必须考虑到介电强度的下降和空气变冷因素。下列表格给出了海拔高度2000m以上的修正值，分断能力保持不变。

海拔高度 m	2000 m	3000 m	4000 m	5000 m
额定工作电流 I_n	$1 \times I_n$	$0.96 \times I_n$	$0.93 \times I_n$	$0.9 \times I_n$
额定工作电压 U_e (V)	690	550	480	420
额定绝缘电压 U_i (V)	800	750	660	550
介电性能 (V)	3000	2500	2100	1800
额定绝缘冲击电压 U_{imp}	8	8	8	8

海拔降容曲线

上海诺雅克电气有限公司
 NOARK Electrics (Shanghai) Co., Ltd.
 地址: 上海市松江工业区松开V-7A-1号地块
 Add: Block V-7A-1, Songjiang Industrial Zone, Shanghai
 电话/Tel: 021-3779 1111
 客服热线/ Customer Service Hotline: 400-1092-111

采用环保纸印刷
 Printed with environmentally-friendly paper
 本说明书解释权归NOARK所有。
 The expression right of the instructions are owned by NOARK.
 Z9M5201212CN